



We care about pigs

www.weda.de

Product Portfolio



We care about pigs.

Those wishing to aim for the maximum possible degree in quality and profitable efficiency in all cycles of pig production, need a competent partner at their side – one who is able to develop and to put into practice made-to-measure solutions: Welcome to WEDA – Dammann & Westerkamp GmbH – in Lutten.

Table of Contents

Liquid feeding 4-39

WEDA non-residue feeding BW+	6
Unit examples for non-residue feeding BW+	7
Stone trap	14
Pumps	14
Macerator	15
Feeding valves	15
Tanks	16
Components agitator	17
Silos, augers & spiral conveyors	18
WEDA pH-Control	19
Electromagnetic flow rate measuring (DFM)	19
WEDA hygiene package	20
MixPipe	22
Silage fodder station	22
Injection MK & additive dosing unit	23
By-products	24
Fermentation	25
Continuous flow rate control	26
Feeding time control / sensor feeding	26
WEDA non-residue feeding BW+ in the pig house	27
Suckling piglet feeding Nutrix	30
Suckling piglet feeding	35
Excellent 4PX	36
W-Mobile	37
WEDA farm software	38
Mill control	39

Dry feeding 40-51

Dry feeding	42
Drive station & feed hopper	44
Deflecting corner	45
Volumetric dispenser	46
Outlets & Co.	47
Automatic feeders	48
OptiMum	49
DryComp system	50
Automatic dry feeding valves	51

Electronic sow feeding..... 52-61

Electronic sow feeding	54
SowComp	56
WEDA control system	60
MDE (Mobile Data Entry)	61

House equipment 62-97

Piglets & finishers

Pens	64
Contact fence & piglet cover	69
Gate locks	70
Pen walls	71
Troughs	72
Drinkers	73
Flooring	74

Sows

Farrowing area	75
Freedom farrowing systems	77
Pens for increased animal welfare	82
Troughs & drinkers for farrowing area	83
Piglet nest covers for farrowing area	84
Flooring for farrowing area	85
Pen walls for farrowing area	88
Breeding stalls for service area	89
Self-catching stalls for group management	92
Barriers for group management	94
Alley lock & boar pen	95
Group pens	96
Troughs & drinkers for service & gestation area	97

Environmental control technology 98-123

Ventilation systems	100
Climate control	114
Ceilings	115
Supply air valves	116
Fans	117
Vent pipes	118
Heating	120
High pressure cooling system	121
Pad climate system	122

Liquid manure treatment..... 124-126

Liquid manure pipe systems	126
Stainless steel liquid manure tank systems	126



Liquid feeding



Liquid feeding 4-39

WEDA non-residue feeding BW+	6
Unit examples for non-residue feeding BW+	7
Stone trap	14
Pumps	14
Macerator.....	15
Feeding valves	15
Tanks	16
Components agitator	17
Silos, augers & spiral conveyors	18
WEDA pH-Control	19
Electromagnetic flow rate measuring (DFM)	19
WEDA hygiene package	20
MixPipe	22
Silage fodder station.....	22
Injection MK & additive dosing unit.....	23
By-products	24
Fermentation.....	25
Continuous flow rate control.....	26
Feeding time control / sensor feeding.....	26
WEDA non-residue feeding BW+ in the pig house	27
Suckling piglet feeding Nutrix	30
Suckling piglet feeding.....	35
Excellent 4PX	36
W-Mobile	37
WEDA farm software	38
Mill control.....	39



WEDA non-residue feeding BW+

Custom solutions for your animal population. With WEDA-designed liquid feeding, large feed quantities can be transported in a short time, even in case of great distances. Both small and large animal populations can always be optimally supplied with this system.



Liquid Feeding

www.youtube.com

Channel: WEDA Dammann
& Westerkamp GmbH



Features

- Computer-controlled, fully automatic system
- Multiphase feeding system
- Demand-oriented feeding according to feed curve
- Precise mixing and dosing of the feed without residue
- Lowest labor costs, highest accuracy
- Saving of the complete pelleting costs
- Automated cleaning at the highest level
- Documentation of consumption and performance data
- At least 15-20% higher feed intake of liquid feed in hot climates
- Water feeding in the day's schedule (drinker program)
- Dry & liquid by-products possible
- All products are feedable, therefore not restricted to cereals, compound feed and pelleted feed, as with dry feeding
- Modular structure
- Customized unit size

Unit examples for non-residue feeding BW+

Examples. On the following pages we present to you some unit examples of all production areas.



Liquid feeding
www.youtube.com
Channel: WEDA Dammann
& Westerkamp GmbH



10,000 finishing and 5,000 piglet places



6,000 finishing places



Unit examples for non-residue feeding BW+

For all farm sizes. Our liquid feeding systems are individually adapted to your needs and are therefore suitable for all farm sizes.



Liquid feeding
www.youtube.com
Channel: WEDA Dammann
& Westerkamp GmbH



2,500 sows



4,000 piglet places

Unit examples for non-residue feeding BW+

A lot of experience. WEDA can fall back on a very large treasure trove of experience: The first WEDA liquid feeding system was developed and produced in-house in 1967.



Liquid feeding
www.youtube.com
Channel WEDA Dammann
& Westerkamp GmbH



3,600 sows



40,000 finishing places



Unit examples for non-residue feeding BW+

Something for everyone. Our liquid feeding systems are specially designed for the needs of the animals in the respective production areas, starting with suckling piglets all the way to the finishers.



Liquid feeding

www.youtube.com

Channel: WEDA Dammann & Westerkamp GmbH



Suckling piglet feeding Nutrix



Non-residue feeding Conticom system for up to 1,500 piglets

Unit examples for non-residue feeding BW+

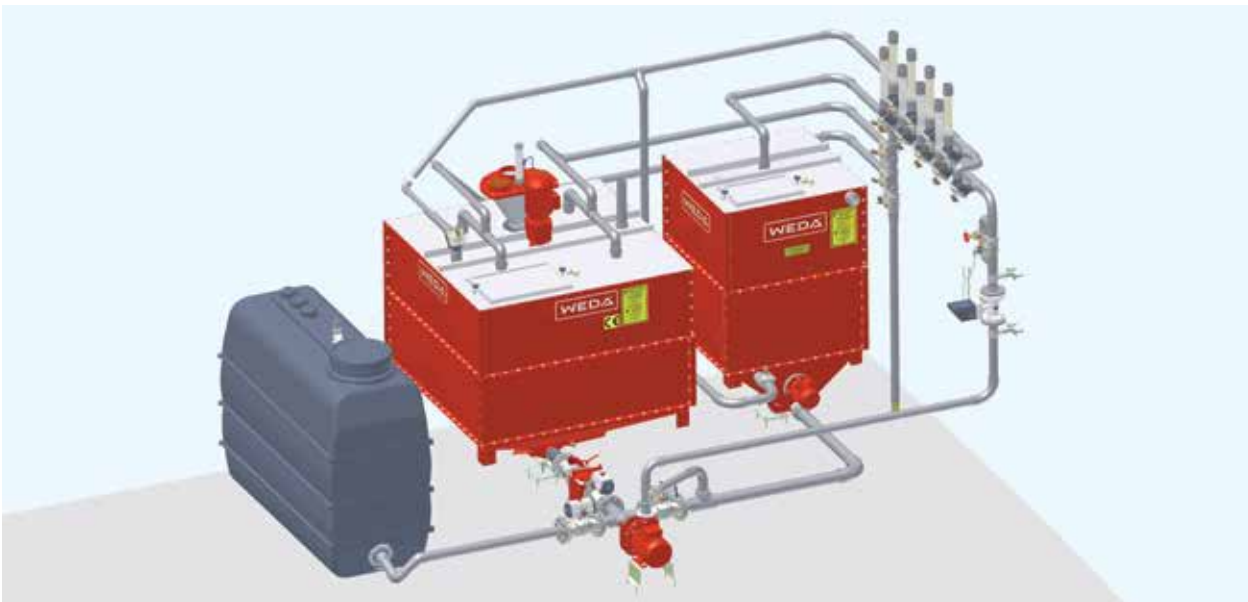
Tanks in the most diverse sizes. The tank dimensions of our liquid feeding systems can be individually adapted to your needs.



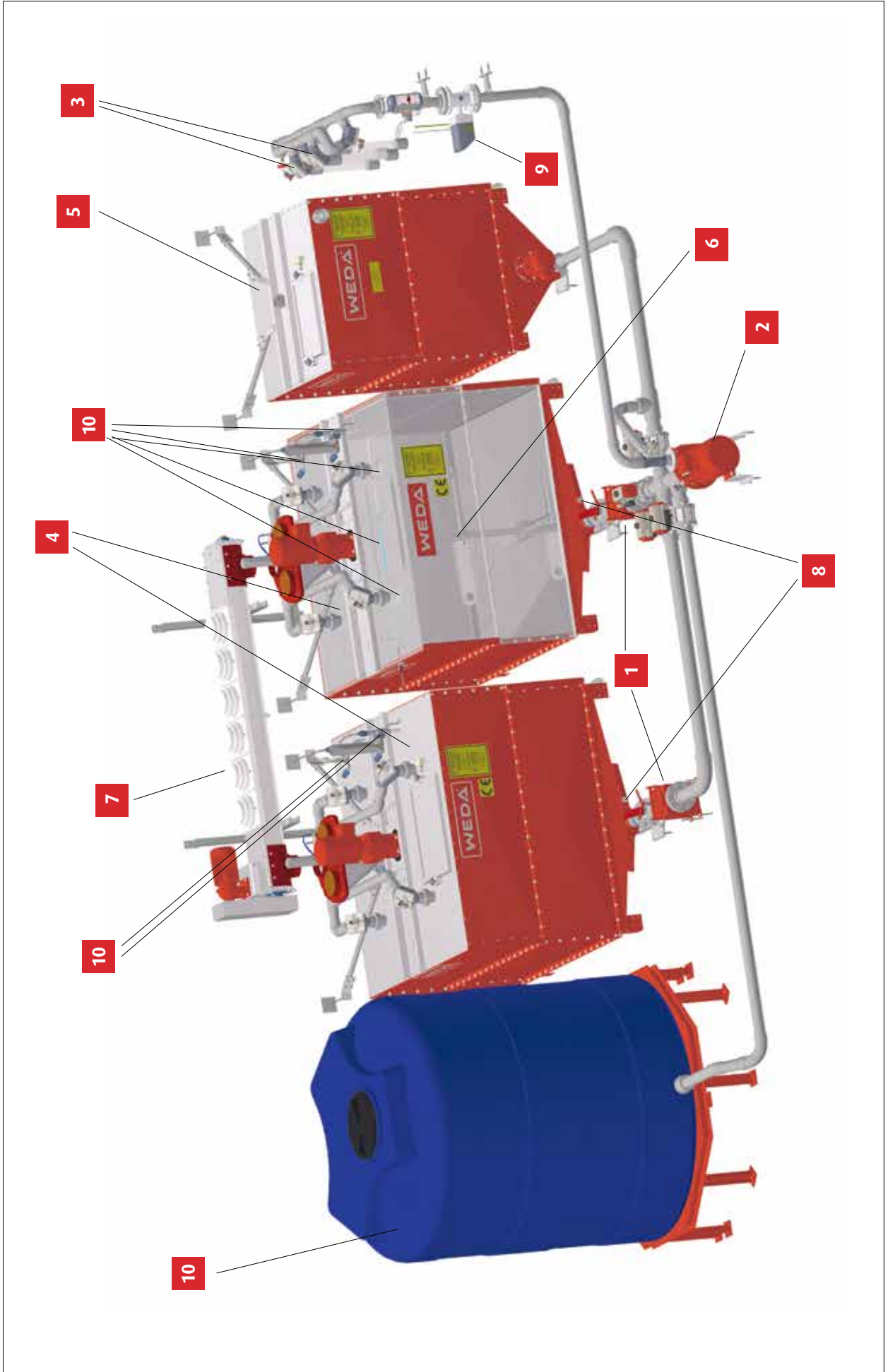
Liquid feeding
www.youtube.com
Channel: WEDA Dammann
& Westerkamp GmbH



Non-residue feeding Double Feed system e.g. for 150 sows in a closed system



Non-residue feeding system for up to 4,000 finishers



1 **Stone trap:** to protect the pump against foreign objects using strong magnets and integrated screen
More information on page 14

2 **Pump:** WEDAs product portfolio includes centrifugal and eccentric pumps. Each pump is tested before being delivered to the customer. And: the spare parts for our pumps are cost-effective.
More information on page 14

3 **Feed valves:** our valves have a large cross-section and a long-lasting special membrane
More information on page 15

4 **Mixing tank with feed hopper:** the feed components are conveyed via the feed hopper into the mixing tank, where they are mixed. Due to the special design of the feed hopper there is no dirt at the meal inflows.
More information on page 16

5 **Service water tank:** for the storage of process water, which helps to transport the feed soup through the pipes to the troughs. The process water acts as a pushing medium. It pushes the feed soup through the pipes to the corresponding feed valves
More information on page 16

6 **Components agitator made of stainless steel:** ensure optimum mixing of the feed components to form a homogenous liquid feed. Our agitators are also available as high-speed cutting agitators.
More information on page 17

7 **R-L-auger:** reliably doses the individual feed components into the feed hopper. Available in stainless steel or galvanized.
More information on page 18

8 **PH-Control:** allows to feed a feed mixture with a specific pH value. An ideal pH value reduces bowel problems in animals and improves their vitality.
More information on page 19

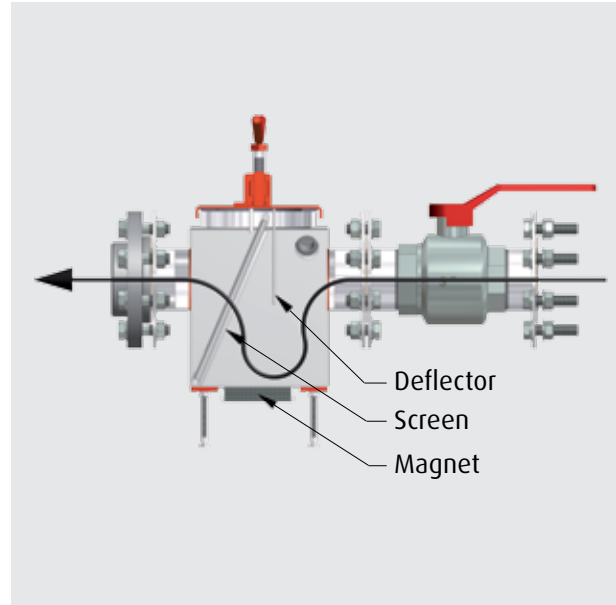
9 **DFM (Electromagnetic flow rate measuring):** the flow rate measuring of the outgoing feed or water takes place after the pump. The measurement increases the dosing accuracy.
More information on page 19

10 **WEDA hygiene package with Hy.Light, acid/lye cleaning, tank cleaning and fresh water tank cleaning:** ensures hygiene and cleanliness in the tanks and pipes.
More information on page 20



Stone trap

Safety for your pumps. To protect the pumps of your liquid feeding system, a stone trap is used. Strong magnets ensure the separation of metals and an integrated screen takes care of non-metallic objects.



Pumps

For a reliable transport in liquid feeding. Our pumps work extremely reliable and provide for a problem-free transport in your liquid feeding system. They are built in our corporate headquarters in Lutten and are extensively tested before leaving the factory.



1



2



3

Features

- Centrifugal and eccentric pumps
- Eccentric pump has been designed for use in extreme areas (e.g. in viscous media)
- Eccentric pump: lowest spare part prices and most proven design for large systems
- Simple service by customer possible
- Each pump is tested before delivery to the customer

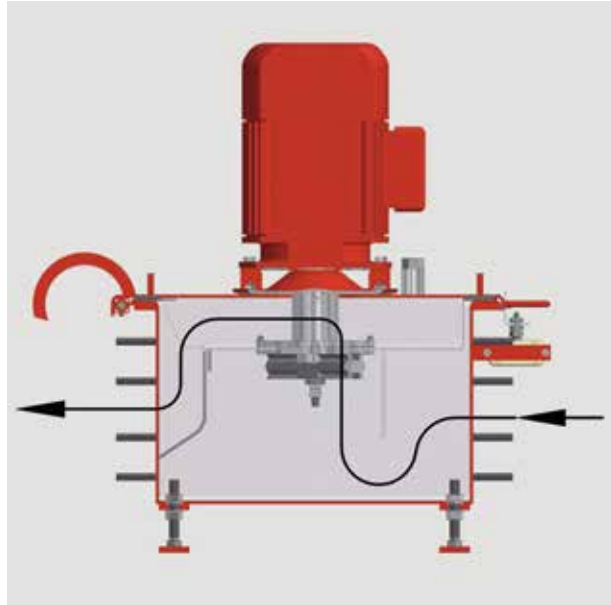
- 1 Eccentric pump
- 2 Centrifugal pump
- 3 Reverse side centrifugal pump

Macerator

Always the same consistency of the feed. The macerator is used for shredding of pumpable media such as French Fries and potatoes. Heavy objects, such as stones, are held back.

Features

- With cutting blade
- Light objects, or even potatoes, are shredded by the knives of the cutting sieve
- Heavy objects, such as stones and metal parts, are safely retained in a container
- The macerator can be controlled with the help of a frequency inverter (for variable speeds)
- Parts in contact with food are made of stainless steel

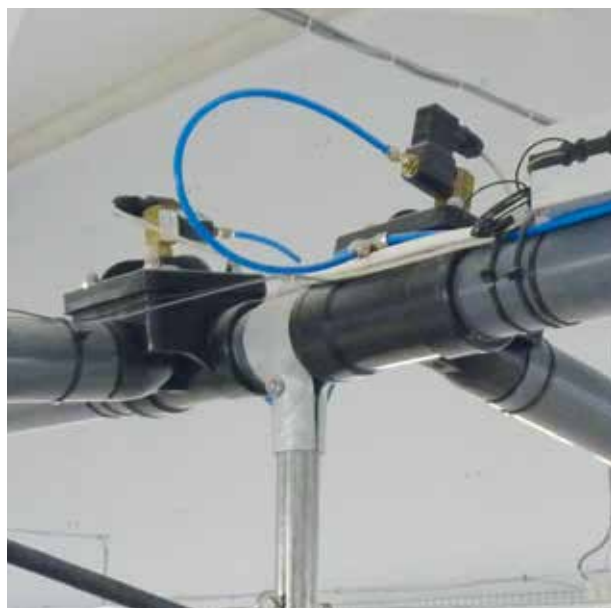


Feeding valves

Proven millions of times. Our feed valves have a large cross section and a long-lasting special membrane.

Features

- Low wear due to large opening
- Special membrane for components with high oil / grease content is available
- Large opening for high throughput
- For even higher wear resistance: valve body is also available in PVC





Tanks

Best quality by WEDA. Starting with the Conticomp container up to the type GR tank: we have the right tank for every system. And we can guarantee maximum quality, because all of our stainless steel tanks are manufactured in our company headquarters in Lutten.



Features

- Optimum container shape and therefore good mixing
- Tank made of stainless steel
- GR-tank: made of GRP
- Clean bolting
- Mostly bolted tank construction, therefore small shipping volume
- Dust Control: up to 95% less dust in the feed kitchen

- 1 Type Conticomp, volume: 5 to 150kg
- 2 Type BWS, volume: 500 to 2,000l.
- 3 Tank ventilation Dust Control
- 4 The 3 modes of the Dust Control: closed, pressure compensation for overpressure and pressure compensation for underpressure (left to right)

Components agitator

Well stirred – not shaken! The agitators from WEDA ensure that the feed components are mixed into a homogenous liquid feed. Our agitators are also available as cutting agitators.



Features

- Agitators made of stainless steel
- Cutting agitators for shredding of feed components (e.g. bread and noodles)
- Softstarter: gentle starting possible
- Modular design for easy service
- 20% energy savings due to special design of the mixer blades





Silos, augers & spiral conveyors

Optimum storage and reliable dosing. In our silos the feed remains fresh and nutritious, regardless of which type of silo you choose. For the reliable dosing of feed components in the mixing tanks, our augers and spiral conveyors are at your service. All silos are also available with weighing by request.



1



3



4



2



Auger conveyor

Features

1 Trough auger (R-L-auger)

- Stainless steel or galvanized versions
- Stainless steel version was specially developed for acid-treated cereals or CCM

2 Galvanized silos

- Special corrugated sheet guarantees long service life
- The strength of the silo walls is adapted to local conditions

3 GRP silos

- Weather resistant
- Easy installation and maintenance
- Smooth inner walls and therefore few adhesions

4 Inside silos

- Made of breathable, uncoated and high-strength, high-tech fabric
- Avoidance of mold growth and caking
- Available with step cone

WEDA pH-Control

Optimum health status and minimum animal losses. With pH-Control the pH-value of the mixed liquid feed is measured and set to a predetermined level. This causes an optimal digestive flora in the gastrointestinal tract of the animals, since a constant pH-value positively influences the amount and activity of digestive enzymes.



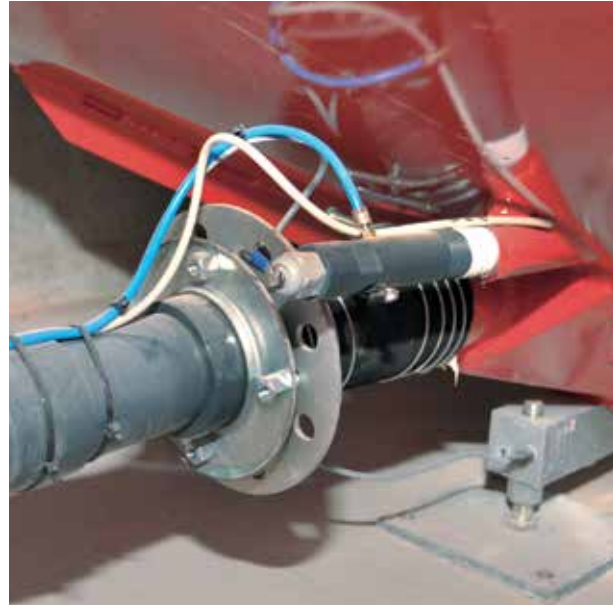
PH-Control

www.youtube.com

Channel: WEDA Dammann
& Westerkamp GmbH

Features

- Especially relevant for piglets and sows
- PH-value adapted feeding
- Significant reduction of intestinal problems
- Better feed intake
- Measuring and controlling of the pH-value (measuring control chain) is carried out automatically
- Ideal pH-value improves vitality of your animals
- Procedure patented by WEDA



Electromagnetic flow rate measuring (DFM)

Measurement independent of scale value. The flow rate measurement of the outgoing feed or water takes place after the pump and is independent of the scale value. The measurement increases the dosing accuracy.



DFM

www.youtube.com

Channel: WEDA Dammann
& Westerkamp GmbH

Features

- In comparison to competitors no emergence of additional process water during feeding (see film for explanation)
- Highest dosing accuracy





WEDA hygiene package

Cleaning on the highest level. To guarantee the health of your animals, WEDA has developed an effective hygiene package for liquid feeding systems.



Hygiene

www.youtube.com

Channel: WEDA Dammann & Westerkamp GmbH



Features

1 WACS (WEDA Active Cleaning System)

- Fully automatic downpipe cleaning
- Suitable for almost all unit types
- Reduction of manual cleaning work
- Problem free integration into existing systems

2 Hy.Light

- Proven UV radiation
- Based 100% on UV light
- Kills bacteria and germs on the walls of the tank
- Prevents the formation of fungi and yeasts
- Hy.Light can be switched off easily
- No endangering of people, e.g. by acid fogging or ozone.
- No risk of unit corrosion

3 Tank cleaning system / sprinkler

- Pump operated
- Cleaning the lid and walls of the tank by means of water or cleaning liquid
- Optimum cleaning effect due to high water pressure and large amount of water

4 Feed hopper

- Conical plug prevents the water from reaching the dry components (no mold growth)
- Smooth end plate in the tank
- Development of pathogenic germs at auger-inflow is avoided

WEDA hygiene package

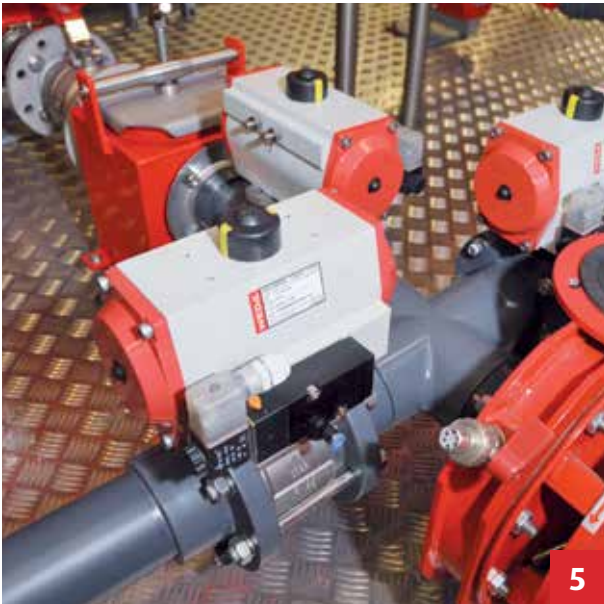
Extensive hygiene. From cleaning systems for liquid feeding units to special feed hoppers to avoid dirt, everything is included in the WEDA hygiene package.



Hygiene

www.youtube.com

Channel: WEDA Dammann
& Westerkamp GmbH



5 Ball valves

- Built in directly at centrifugal pump or stator of the eccentric pump
- No dead corners in the pipe system
- Completely made of stainless steel
- Simple service, because it is screwed and not glued

6 Membrane pumps

- Specially designed for chemicals
- Automatic weekly cleaning of the feeding system
- For pH-regulation and alkaline cleaning of the system

7 Cleaning with acid / lye

- Automatic cleaning with lye to remove acidtolerant organisms (e.g. yeasts)
- Safe acid washing of the pipes



Acid / lye cleaning connection at the mixing tank



MixPipe

Often copied, but never achieved. Buy the original! The MixPipe avoids a separation of water and feed and is one of our most successful product developments.



MixPipe

www.youtube.com

Channel: WEDA Dammann & Westerkamp GmbH



Features

- Active prevention of transportation sedimentation
- While passing through the feed line, the feed mixture is constantly remixed
- Pipe inside furnished with a spiral structure, in the shape of an approx. 10mm high lip



Silage fodder station

Optimum intermediate storage of feed at any time. The silage fodder station is an intermediate storage unit for dry and wet feed components. Conveying the feed components into the mixing tank of the liquid feeding system is done by a screw conveyor or a pumping station.



Features

- Economic CCM acceptance
- Container made of glass fiber reinforced plastic (GRP) with reinforced steel upper edge
- Base plate of the tank made of stainless steel
- Ideal for CCM (Corn-Cob-Mix) and wet cereals
- Larger bales and lumps are safely crushed and discharged
- Available in five different sizes
- Optionally with return flow pump
- Cover possible

Injection MK & additive dosing unit

Adding additives – simple and safe. With the injection MK and the additive dosing units, additives can be easily and quickly processed and fed into liquid feeding systems. The dosing is carried out either directly into the mixing tank, or via the injection MK into the feed line or the downpipe.

Features

Injection MK

- Dosing into individual pens and entire pig houses
- Direct dosing of additives in downpipe
- Prevention of protraction of additives into feed lines
- Optimum mixing of additives with feed ensured

Additive dosing unit

- Dosing of liquid or dry additives
- Reliable and high dosing accuracy



Injection MK



Additive dosing unit



- 1 MD40
- 2 MD15
- 3 S400



By-products

Complete solutions from one source. By-products such as whey, kitchen waste or potato pulp are inexpensive protein and fat supplements, that are mixed with conventional feed components and then fed.



Pumping station for by-products

Features

- Less expensive than conventional feed
- Homogeneity / feed viscosity
- Optimum feed conversion
- Nutritional benefits / animal health
- Natural acid / lactic acid
- Customized planning
- WEDA supports with the planning of by-product storage

Fermentation

Lower costs at better health. Fermented feed components have been proven to have a positive effect on the health of animals in the pig house. Coughing and diarrhea problems are significantly reduced, along with salmonella. This lowers veterinary costs and the use of antibiotics.



Fermentation
www.weda.de/en/liquid-feeding



Features

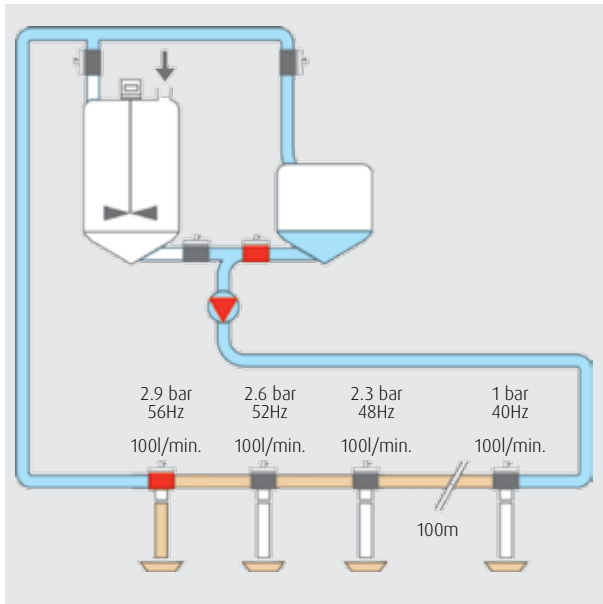
- Probiotic effect
- Significant reduction in the use of medicines and thus reduction of veterinary costs
- Profit increase of 2-5€ per finisher
- Finishers: 100% reduction of mineral phosphorus
- Significant reduction of phosphorus content in liquid manure
- Cost-effective use of domestic feed components
- Complete soy substitute possible





Continuous flow rate control

For a long service life of your unit. The WEDA feeding software in conjunction with a frequency converter ensures a constant flow rate in the pipe and causes a smooth rate of outflow at every valve, although the pressure changes with changing distance. This way shocks in the system are avoided and the service life of the system is increased.

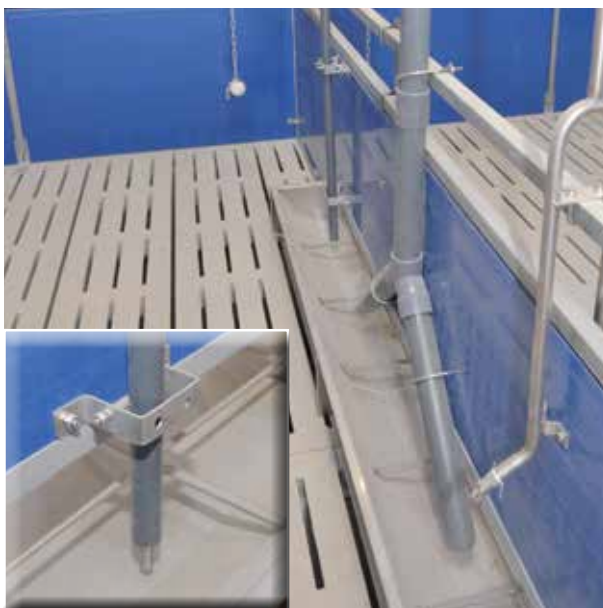


Features

- Optimum balancing between maximum pumping speed and highest accuracy for rate of outflow
- Stepless control of the feed pumps
- Dosing into the troughs with significantly reduced pressure. Spraying during feeding is prevented
- Additional control of the feed silo augers is possible
- Reduction of feed losses
- Long operating times, low wear of the system
- Lower power consumption

Feeding time control / sensor feeding

Optimal use of the genetic potential of your animals. The trough sensor can be used for both, the control of the feed quantities based on the feeding time, as well as for feeding by means of a sensor. With the help of the trough sensors, the feeding computer checks the feed level in the troughs and thus optimizes the feed supply.



Features

- No food remains under the sensor, because the animals can take up the feed (wobbling sensor)
- Higher feed intake and therefore also increase in daily weight gain possible
- Avoidance of under- or overfeeding of the animals
- Controlled water feeding via liquid feeding system with sensor possible

WEDA non-residue feeding BW+ in the pig house

Examples. On the following pages some pictures from the pig house are shown, which illustrate how the WEDA non-residue feeding BW+ is installed.



Liquid feeding
www.youtube.com
Channel: WEDA Dammann
& Westerkamp GmbH



Piglet house with sensor trough



Finishing house with long trough and feeding time control



WEDA non-residue feeding BW+ in the pig house

Best care for your animals. The WEDA non-residue feeding BW+ provides and controls all production areas via a fully automatic and computer-controlled control system.



Liquid feeding

www.youtube.com

Channel: WEDA Dammann
& Westerkamp GmbH



Finishing house with sensor trough and ad libitum feeding



Service area: breeding stall with western gate

WEDA non-residue feeding BW+ in the pig house

Flexible feeding. With our non-residue feeding BW+ all products can be fed. For this reason there is no exclusive restriction on cereals as in the case of dry feeding.



Liquid feeding
www.youtube.com
Channel: WEDA Dammann
& Westerkamp GmbH



Gestation area with group feeding



Farrowing area with feeding time control



Suckling piglet feeding Nutrix

Optimal feeding of the youngest. The Nutrix is a fully automatic, sensor-controlled liquid feeding system for supporting the feeding of suckling piglets in the first days after farrowing.



Nutrix
[www.weda.de/en/
liquid-feeding](http://www.weda.de/en/liquid-feeding)



Nutrix feeding kitchen



Nutrix control

Features

- Average surplus per litter: €20
- Up to 8 times higher feed intake compared to manual feeding
- 20kg saving of sow feed per sow and year
- Reduced piglet losses as animals are optimally supplied
- Significantly better condition of the sow after the suckling period (better fertility, less muscle mass loss)
- Feeding of milk substitutes all the way to prestarter and up to weaning feed.
Consequence: lower feed costs
- Maximum hygiene status due to acid-alkaline flushing and drain pipe cleaning
- Significant reduction in management workload of large litters, as the system works fully automatic and can be remotely controlled.
- Smallest dosage of only 30-40g per trough dosing
- More than 100 feedings per day

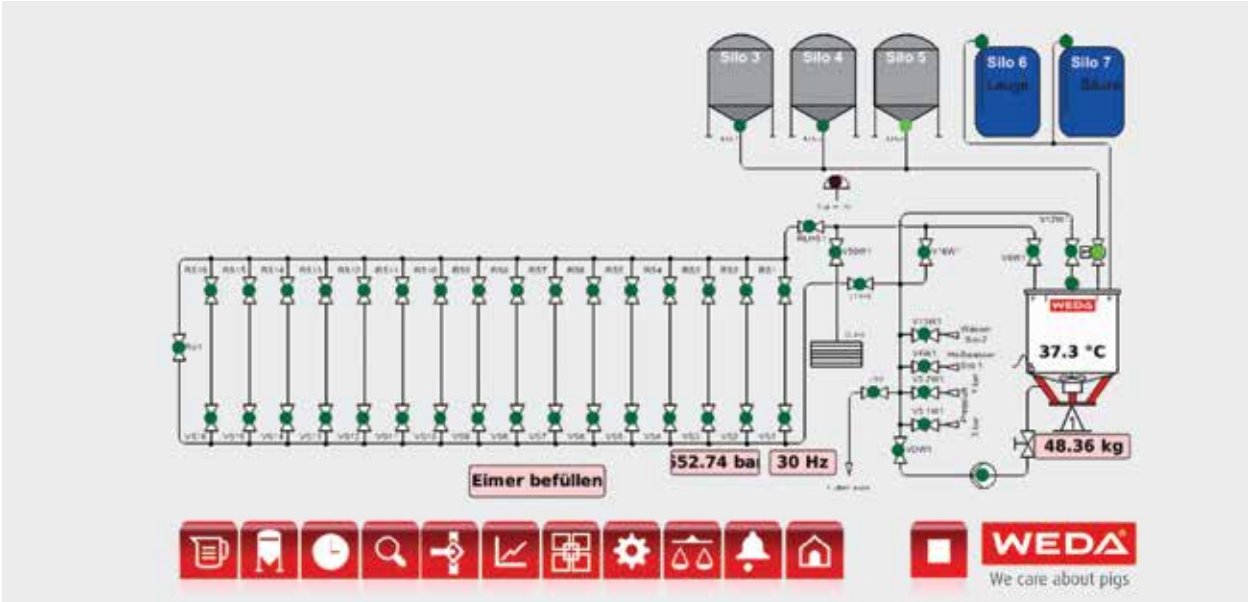
Suckling piglet feeding Nutrix

Save money. With the Nutrix, any piglet feed can be fed, from milk substitutes and prestarters to weaning feed. The consequence: lower feed costs.



Nutrix
www.weda.de/en/
liquid-feeding

Liquid feeding



System visualization

General parameters		Clean weekly schedule								
	Weekday	Emptying	Rinse Hand1	Acid	Lye	Report	WACS+	Rinse Hand2	WACS	Emptying water
0	Sunday	Yes	No	No	No	No	No	Yes	Yes	Yes
1	Monday	Yes	No	Yes	No	Yes	Yes	Yes	Yes	Yes
2	Tuesday	Yes	No	No	No	No	No	Yes	Yes	Yes
3	Wednesday	Yes	No	No	No	No	No	Yes	Yes	Yes
4	Thursday	Yes	No	No	Yes	Yes	Yes	Yes	Yes	Yes
5	Friday	Yes	No	No	No	No	No	Yes	Yes	Yes
6	Saturday	Yes	No	No	No	No	No	Yes	Yes	Yes

With the help of the “cleaning plan”, manual and automatic cleaning of the system can be planned for the entire week. The labor-intensive cleaning processes can be carried out on the days that have little or no workload peaks.

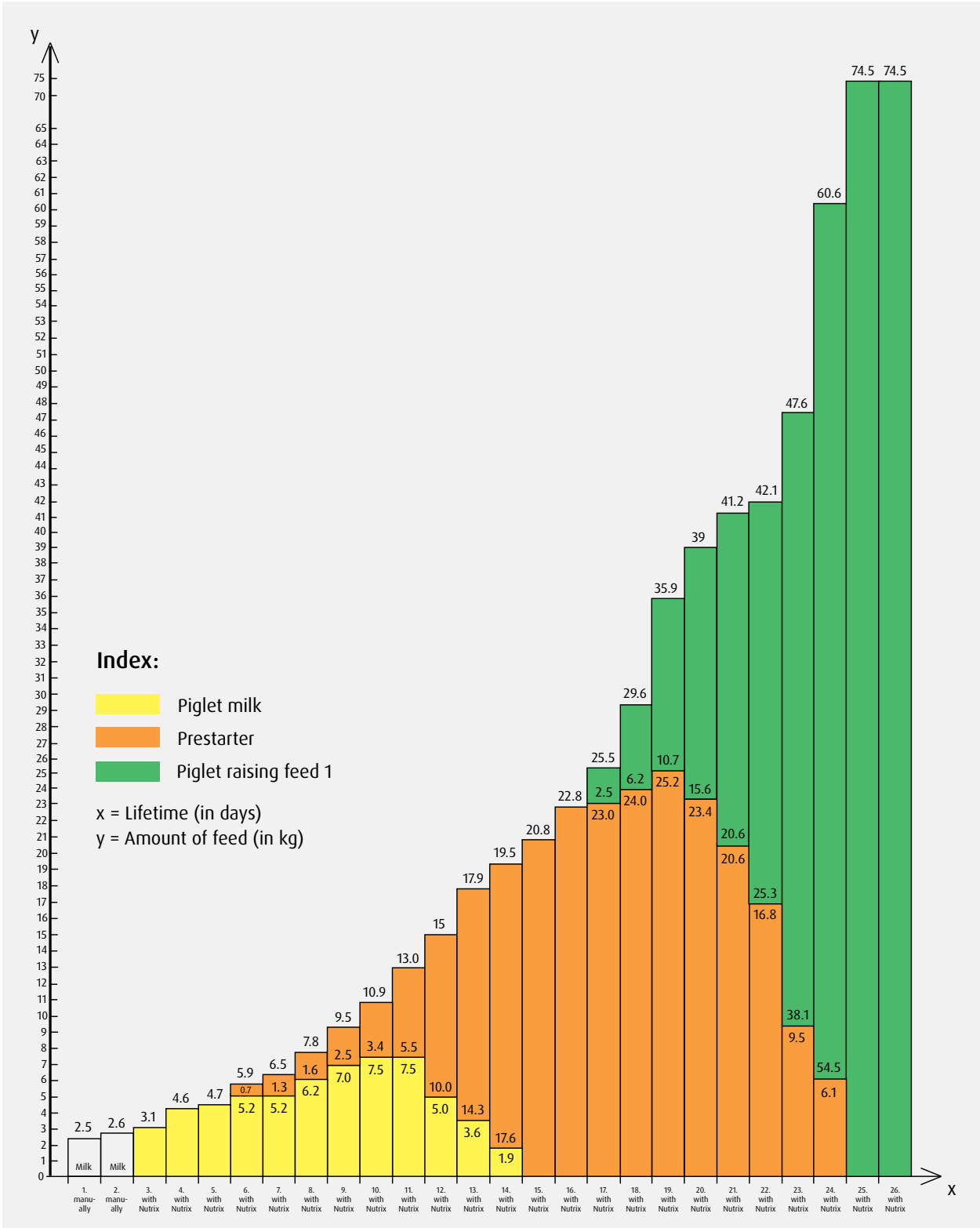


Suckling piglet feeding Nutrix

Feeding concept. The feeding curve below shows a feeding concept of the suckling piglet feeding Nutrix for 650 piglets.



Nutrix
www.weda.de/en/liquid-feeding



Suckling piglet feeding Nutrix

Much easier work. When managing large litters, the Nutrix significantly reduces the workload, as the system works fully automatic and can be remote controlled.



Nutrix
www.weda.de/en/liquid-feeding



Nutrix with 2 mixing tanks with feed dosage FD



Feed dosage FD



Parallel running system for 2,500 sow places (system can be extended to up to 4,000 sow places).



Suckling piglet feeding Nutrix

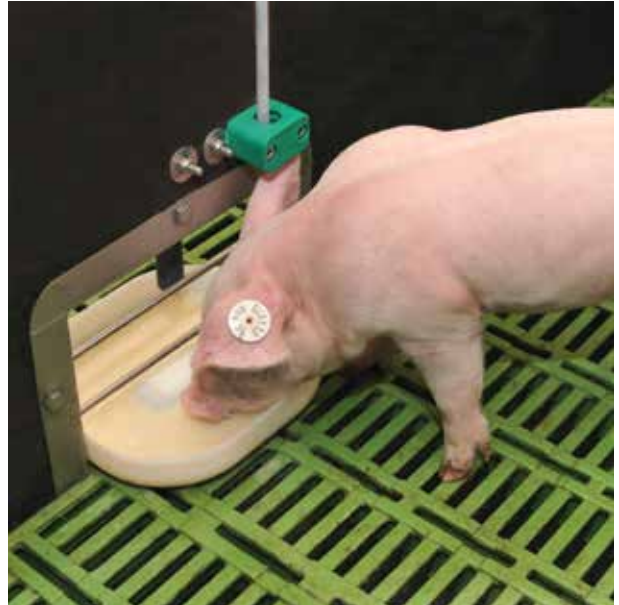
Easier transition. After weaning, the piglets can stay in the farrowing pen for another few days, to ease the transition to the weaner area. To optimally supply them in this time, the small trough is removed and replaced with a large stainless steel trough.



Nutrix
www.weda.de/en/liquid-feeding



Plastic trough with plastic frame



Island trough



Nutrix in the pig house



1



2



3

- 1 Removable Nutrix trough, large
- 2 Removable Nutrix trough, small
- 3 Cleaning of plastic trough

Suckling piglet feeding

Best supply for your suckling piglets. Our product solutions support you in optimal supply of your suckling piglets, no matter if with an automatic feeder or a mobile liquid feeding system.



Easy Feeder

www.youtube.com

Channel: WEDA Dammann & Westerkamp GmbH



Features

4 PigRunner

- Automatic feeder for piglets of 3-14kg
- Several small portions a day (avoidance of feed depression and achieving higher feed intake)
- Individual water quantity and feeding times adjustable.
- Easy set-up in the pen, because PigRunner is mounted on a plate (no mounting in the pen required)

- Up to 50% time saving compared to conventional hand-feeding
- Mix the required amount of feed in the EasyFeeder, drive off, feed, done.
- Feeding by means of a lance enables exact dosing
- Integrated thermometer shows the current feed temperature
- Problem-free integration into existing units
- Available with rechargeable battery or with a cable

5 EasyFeeder

- Mobile liquid feeding for suckling piglets in the farrowing pen
- Maximum volume: 100 liters
- Minimum volume: 10 liters
- Feeding of prestarter and feed with DS contents of up to 27% easily possible
- Several small portions a day (avoidance of feed depression and achieving higher feed intake)



Excellent 4PX

The controlling system for your pig house. The Excellent 4PX is a cost-effective Linux-based control system which controls all procedures with high efficiency during feeding.



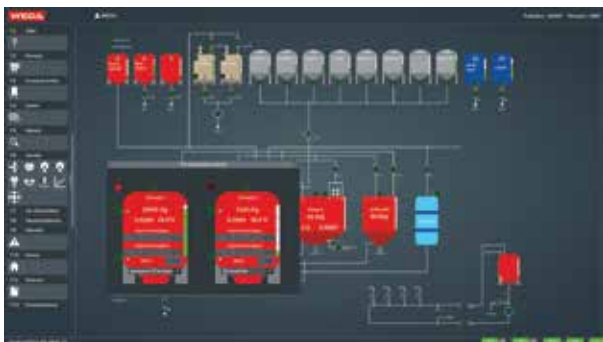
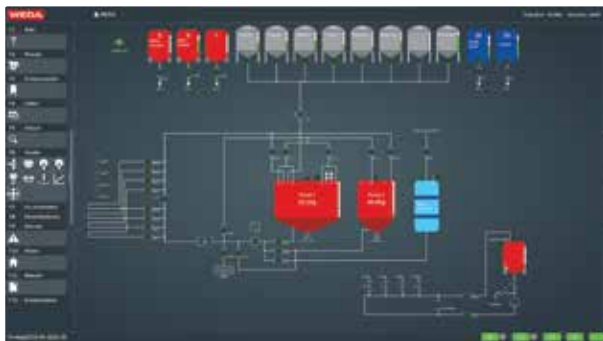
Software

www.youtube.com

Channel: WEDA Dammann & Westerkamp GmbH



The individualized dashboard shows the status of the system at a glance.



Features

- Designed and robustly constructed in-house by WEDA
- Little change of hardware
- Long-term spare parts supply
- Easy management and ISOagriNET compatible
- By means of a logbook it is possible to perform follow-ups
- Easily understandable symbols
- Individual process visualization (see upper picture on the left)
- User-related input rights
- Upon request, the WEDA service team can log on to the system and help with settings or problems
- Customized equipment in the hardware and software areas due to modular design, thus simple expansion possibilities
- Fermi 4PX fermentation software ensures smooth fermentation process (see below picture on the left)

W-Mobile

Wireless access to all animal and feed data. With W-Mobile, feed corrections and animal movements can be executed directly in the pig house. The data is fed into the main computer via a W-LAN interface (hot spot).



Software

www.youtube.com
Channel: WEDA Dammann & Westerkamp GmbH



Main screen



Display of valves

Features

- Management of moving-in, moving-out, moving, animal losses and feed corrections
- Touch screen operation
- Connection to Excellent 4PX via W-LAN or UMTS
- Fast entry possible without keyboard
- Real-time operation
- Operation with any commercially available device possible



1



2



3



4

- 1 Fast data entry
- 2 Add data easily
- 3 & 4 Feeding control



WEDA farm software

Comprehensive management for your pig house. With the WEDA farm software, a farmer can log into the feeding and climate computer of the farm with his main computer or a mobile gadget, to get an overview of the status or to make necessary modifications.



Software

www.youtube.com

Channel: WEDA Dammann
& Westerkamp GmbH

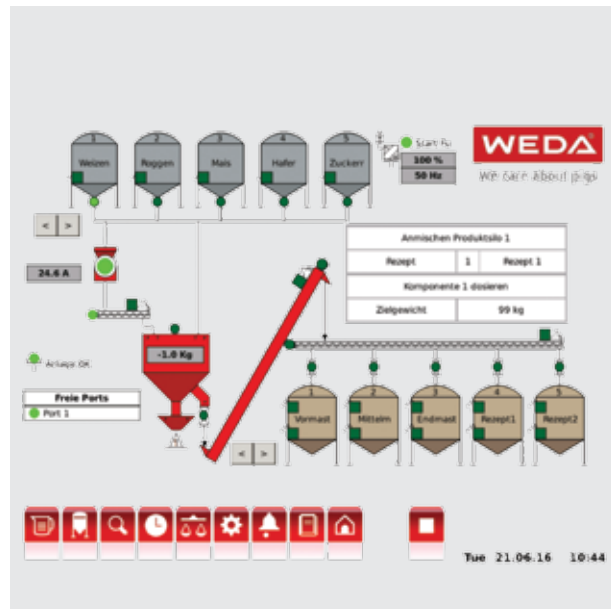


Features

- Remote control of all systems in the pig house
- User interface can be adapted to the needs of each user (language, control panels)
- On request, the system sends an email every morning with user-defined information (for example "Which animals did not eat enough yesterday?")
- Easy administration
- Clarity and easy operation due to comprehensible pictograms
- Cost-effective
- Informative „traffic light system“. Rectangular color fields next to the stable areas show the respective status in the same colors as a traffic light: green = ok, red = error

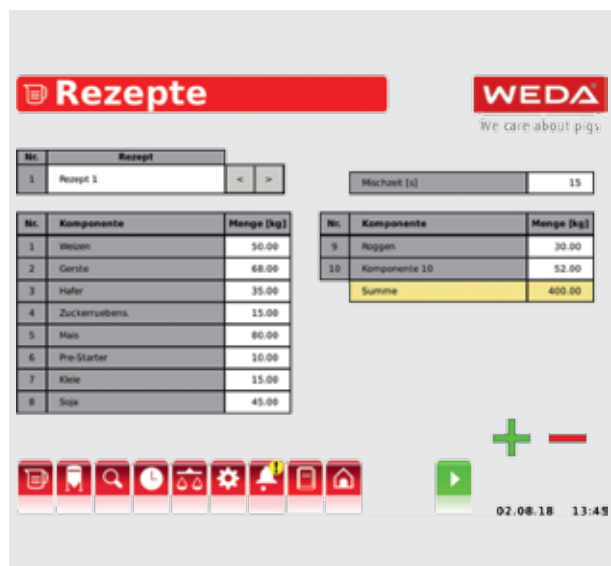
Mill control

Everything under control. The mill control is operated via a touch-screen and can be adapted to the customer's unit on site.



Features

- Touch screen
- Visualization
- Simple operation
- Choice between automatic and manual dosing
- Data can be backed up via USB and Ethernet and a mixing certificate can be retrieved





Dry feeding



Dry feeding..... 40-51

Dry feeding..... 42
Drive station & feed hopper 44
Deflecting corner 45
Volumetric dispenser 46
Outlets & Co..... 47
Automatic feeders 48
OptiMum 49
DryComp system..... 50
Automatic dry feeding valves..... 51

Liquid feeding

Dry feeding

Electronic sow feeding

House equipment

Environmental control technology

Liquid manure treatment



Dry feeding

Quick and easy. Below we present to you some examples of dry feeding systems from our product portfolio.

Dry feeding



Dry feeding with Classic Feeders in the weaner area



Multikind feeding in the finishing house

Dry feeding

Dependable, reliable, durable. Our products for dry feeding convince with safe technology and simple operation. Our reliable control units and high-quality silos leave nothing to be desired.



Control centre of dry feeding system with 6 feed lines



Outdoor silos for dry feeding



Inside silos for dry feeding



Drive station and feed hopper

Robust and reliable. The drive station and feed hopper convince with robust technology. Due to our high-quality feed hoppers and trustworthy drive stations, your animals are optimally supplied.

Dry feeding



Drive station K1



Features

1 Drive station K1 (interior view)

- Pulls the conveyor chain through the feed line
- Stable drive wheel

2 & 3 Feed hoppers K1 and K

- Stable
- Suitable for indoor and outdoor installation
- For one or two lines as required
- Various silo connections
- Just K: Drive via chain conveyor or via motor-driven drive. With spiral conveyor for evenly adjustable supply.

Deflecting corner

Making it around the corner safely. Deflecting corners guide chains via a running wheel and enable trouble-free transport around corners. The integrated running wheels reduce wear and ensure a long service life of the chain.



Deflecting corner made of plastic



Deflecting corner made of stainless steel

Features

- Ensures trouble-free transport of the feed around corners
- Ball bearing running wheel made of stainless steel enables particularly safe operation
- Made of plastic or stainless steel
- Also available as a driven deflecting corner



Driven deflecting corner



Volumetric dispenser

Always the right amount of feed. The volumetric dispenser is connected directly to the feed line. Filling takes place via a closable opening in the feed line.

Dry feeding



Volumetric dispenser for one feed line



Volumetric dispenser for two feed lines

Features

- Transparent with front cover opening for easy cleaning
- No corners and hidden edges
- Easy dosing adjustment and quantity adjustment by means of slide
- Easy opening and secure closure due to ball mechanism
- Also available as a version for two feed lines

Outlets & Co.

Dry components safely dosed out. With our products, the dry feed reaches your animals safely, starting with the outlets up to the volumetric dispenser.



Automatic release mechanism (pneumatic) for volumetric dispensers



Manual release mechanism for volumetric dispensers



Outlet



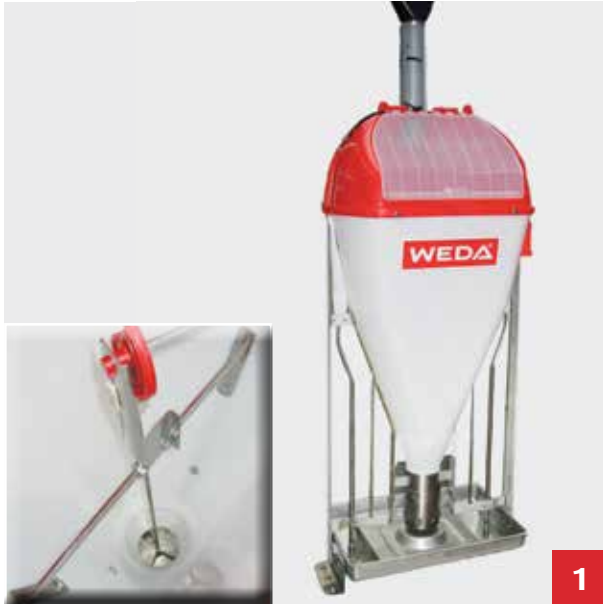
Stepless adjustable telescopic downpipe



Automatic feeders

Growth gains through continuous feeding of small portions of feed. With our robust, stable and durable automatic feeders your animals are always optimally supplied with feed.

Dry feeding



Classic Feeder



Mash Feeder

Features

Classic Feeder (Multi / finisher)

- For up to 40 animals from 7 to 120kg (country-specific regulations must also be observed)
- When dosing the dry feed into the feed bowl, water can be added via two nipple drinkers, resulting in a mash

Mash Feeder

- Very applicable for pellets and meal
- Manual dosage adjustment and manual nipple drinker

Automatic feeders

The automatic feeder for the little ones. The dry feed double automatic feeder is ideal for meal, as well as for pellets, and feeds your piglets in a reliable and fast way.



Automatic dry feed double feeder made of plastic with 2x8 feeding places



Automatic dry feed double feeder made of stainless steel with 2x7 feeding places

Dry feeding

OptiMum

Simply dosed. Our OptiMum is a dosing system with probe and motor for individual dry feeding of sows. With this system, the sows are optimally supplied with feed.

Features

- Individual feeding of sows with small, fresh portions of feed
- Mounting under the commercially available volumetric dispenser
- Increase in feed intake increases the milk yield and improves the condition of the sow
- Feeding: Ad libitum or rationed possible
- Feeding according to feeding curve possible
- Control via feeding computer
- Sensor: optional





DryComp system

The perfect multiphase feeding for optimal growth. Our DryComp system is a computer controlled multiphase feeding system, which enables the targeted supply of individual delivery points.

Dry feeding



Simple DryComp system



Parallel working DryComp system

Features DryComp

- Weighing mixer in which different types of dry feed can be combined as required and fed via independent feed circuits
- Exact weighing systems (up to 10g resolution) guarantee very high dosing accuracy
- Possibility of sensor feeding
- Simultaneous mixing and feeding of the prepared rations
- Computer-controlled system for the farm's own compound feed production
- Two mixers can be parallel supplied, each with a maximum of 4 lines
- Excellent 4PX control computer: Same advantages as for liquid feeding (see page 36)

Automatic dry feeding valves

Simple opening and closing. With our automatic dry feeding valves, the magnetic valves of the dry feeding system can be easily controlled by computer.



Dry feeding



Electronic
sow feeding



Electronic sow feeding 52-61

Electronic sow feeding 54
SowComp 56
WEDA control system 60
MDE (Mobile Data Entry) 61



Electronic sow feeding

Food on call. With our electronic sow feeding system, you can assign each animal exactly the amount of feed it needs. Our technology makes this possible. The following pages show projects that WEDA has carried out domestically and abroad.

Electronic sow
feeding



2,400 sows



2,400 sows

Electronic sow feeding

Ideal for the group. The electronic sow feeding system is particularly well suited for group management, as each sow can eat her respective amount of feed without being disturbed.



500 sows

Electronic sow
feeding



SowComp electronic sow feeding station



Laying area



SowComp

With our SowComp it tastes good to the sow. The SowComp is a computer-controlled electronic sow feeding system especially for group management of sows. Ear transmitters allow perfect pre-programmed feeding of individual sows.



SowComp

www.youtube.com

Channel: WEDA Dammann & Westerkamp GmbH

Electronic sow
feeding



Entrance area



Exit area with selection

SowComp

Tried and tested, user-friendly, versatile, effective. Software and hardware components support important management functions such as the selection of sows from the group, the training of gilts or regular data backups.



SowComp
www.youtube.com
Channel: WEDA Dammann
& Westerkamp GmbH



Entrance



Color marking



Heat detection

Electronic sow
feeding



SowComp

Eating must be learned. Each fully equipped WEDA electronic sow feeding station can also be used as a training station. The modern control of the Excellent 4PX for SowComp has user-friendly programs that enable the animals to be trained without any problems.



SowComp

www.youtube.com

Channel: WEDA Dammann
& Westerkamp GmbH



Stainless steel trough with trough flap

Features SowComp

- Individual and demand-oriented feeding (liquid and dry) of up to 60 sows per station. This ensures compliance with the German Animal Welfare Ordinance with regard to the maximum number of animals per station.
- With central selection, up to 300 sows per selection unit can be managed and up to 6 electronic sow feeding stations can be connected to the selection device
- Station can be operated in normal or training mode
- SowComp Twin: Easy supply of feed to up to 50 animals

Electronic sow
feeding



The doors of the electronic sow feeding station are closed by a pneumatic mechanism with low air pressure, which is mechanically locked (note: cover has been removed for better display).

SowComp Twin

SowComp Twin: The solution for small sow populations. The SowComp Twin is the perfect, more cost-effective solution for keeping smaller sow populations in fixed groups. Up to 50 animals can be easily supplied with feed by the SowComp Twin.



SowComp

www.youtube.com

Channel: WEDA Dammann
& Westerkamp GmbH



SowComp Twin: Cost-effective solution for keeping smaller numbers of sows in fixed groups (max. 2 x 25 animals).

Electronic sow
feeding



WEDA control system

Efficient group management of sows. The ISOagriNET supported WEDA control system enables individual animal management on the basis of genetic rules of conduct and can be easily adapted to growing farm sizes and the needs of the farmer.



Software

www.youtube.com

Channel: WEDA Dammann
& Westerkamp GmbH



Electronic sow
feeding

Features

- Ear transponder allows feeding according to feeding curve
- Improved management through individual animal identification and computer-controlled feeding
- Up to 30 electronic sow feeding stations / devices, e.g. central selection and noise controls, can be connected to one control system
- Extensive documentation (e.g. feed intake, number of visits to the station, sow routes, position recognition of the sows within the station)
- Individual actions for each station possible (switching the station on and off, opening the entrance gate to train gilts and dosing out a feed portion for training gilts or for controlling the dosing unit)
- Each station can feed two types of feed, liquid or dry, or an additive
- System controls the compliance of established code of behavior, farmer only has to react to deviations
- Software and hardware components support important management functions, such as the selection of sows from the group or regular data backups
- The visualization of the system enables fast and easy work
- Same electronic components as liquid and dry feeding

MDE (Mobile Data Entry)

All important animal data at a glance. With the MDE, the ear tags of the sows can be identified quickly. After identification, selected animal-specific data appears on the display and can be modified at will.



Electronic sow
feeding

Features

- Special search function: if the 4PX shows an animal that has not eaten sufficiently, its data can simply be transferred to the MDE. During the animal check, the MDE indicates the animal in question with an alarm tone when its ear tag is scanned.
- Display of important animal data, such as day of cycle, feed consumption of the last two days, etc.
- Parameters can be selected individually
- Data can be modified as desired





House equipment



House equipment..... 62-97

Piglets & finishers

Pens	64
Contact fence & piglet cover.....	69
Gate locks	70
Pen walls	71
Troughs	72
Drinkers.....	73
Flooring.....	74

Sows

Farrowing area	75
Freedom farrowing systems.....	77
Pens for increased animal welfare.....	82
Troughs & drinkers for farrowing area	83
Piglet nest covers for farrowing area.....	84
Flooring for farrowing area	85
Pen walls for farrowing area.....	88
Breeding stalls for service area	89
Self-catching stalls for group management	92
Barriers for group management	94
Alley lock & boar pen	95
Group pens	96
Troughs & drinkers for service & gestation area	97

Liquid feeding

Dry feeding

Electronic sow feeding

House equipment

Environmental control technology

Liquid manure treatment



Finisher and piglet pens

Pens for young and old. Below we give you an overview of the different types of pens in our product portfolio.



Finisher pen type standard

House equipment



Piglet pen type standard

Finisher and piglet pens

Safe pig keeping at the highest level. WEDA pens are made of high-quality materials in which your animals can feel completely comfortable. Since no parts protrude into the pens, there is no risk of injury to humans and animals.



Finisher pen type DK

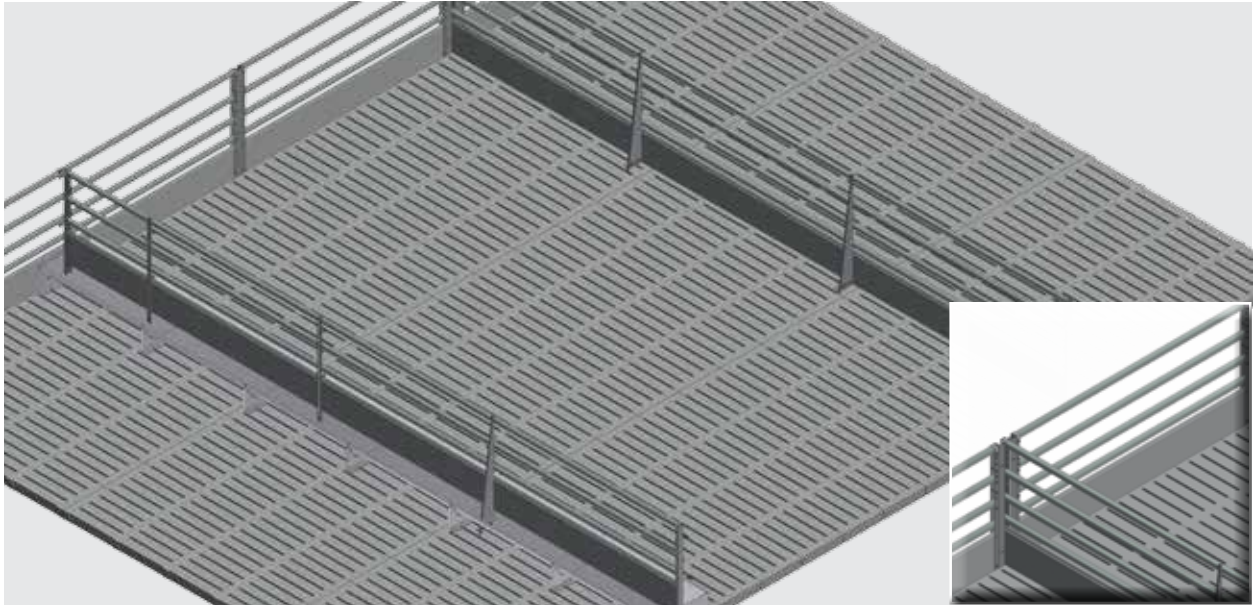


Piglet pen type DK

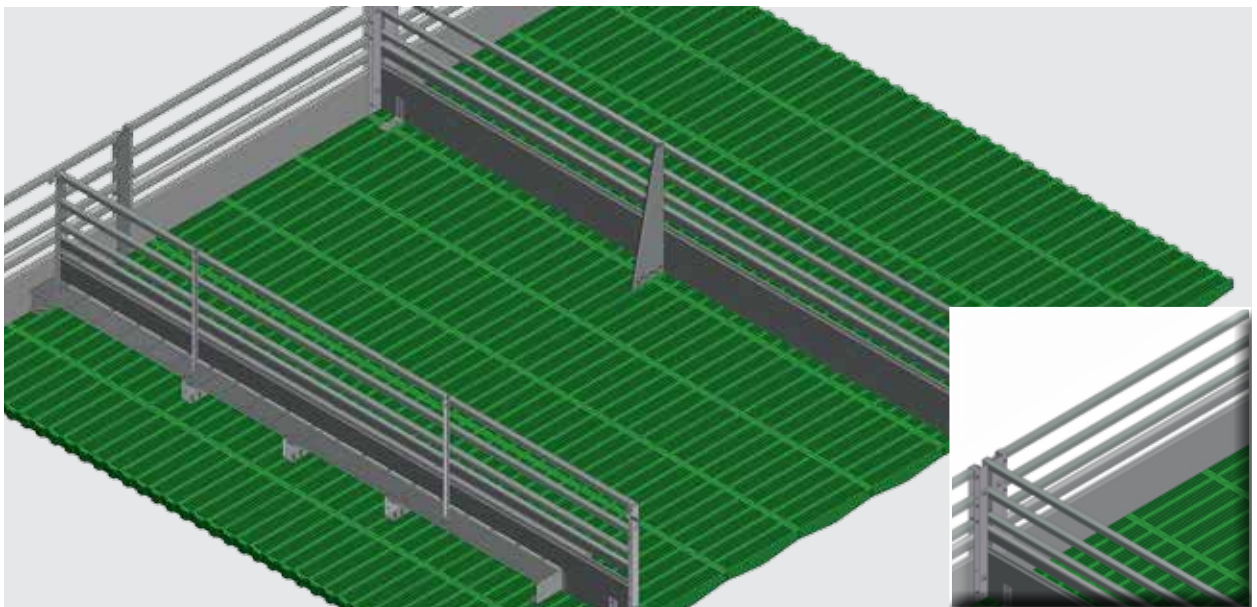


Finisher and piglet pens

Ideal for warmer climates. The finisher and piglet pens shown here have been especially developed for pig houses with tunnel ventilation. The air can be exchanged optimally due to the galvanized iron grid pen walls.



Finisher pen for tunnel ventilation



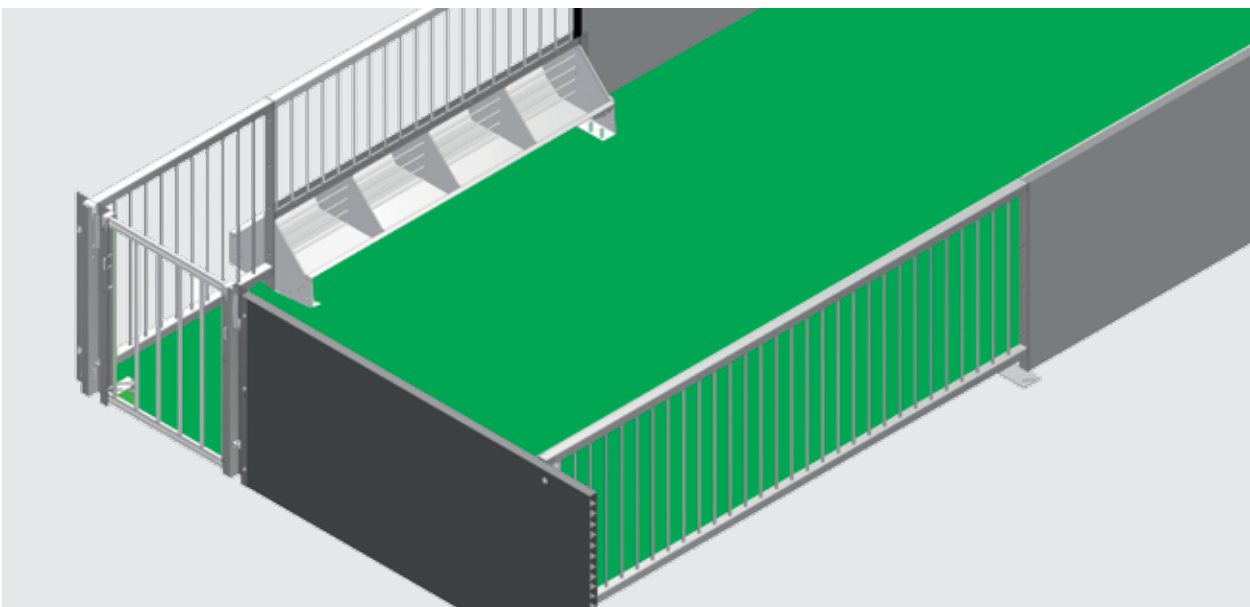
Piglet pen for tunnel ventilation

Finisher and piglet pens

Well-being for the little ones. This piglet pen for tunnel ventilation has galvanized iron grids that allow contact with other piglets. The piglet's nest is closed and offers cozy warmth.



Piglet pen for tunnel ventilation

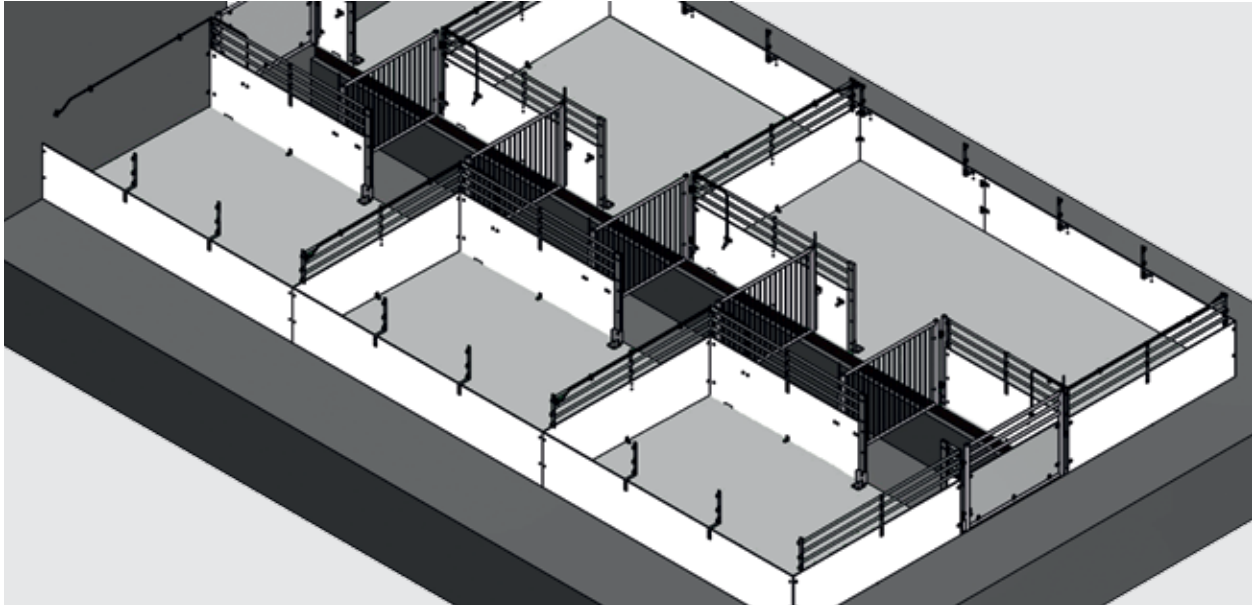


Piglet pen for tunnel ventilation

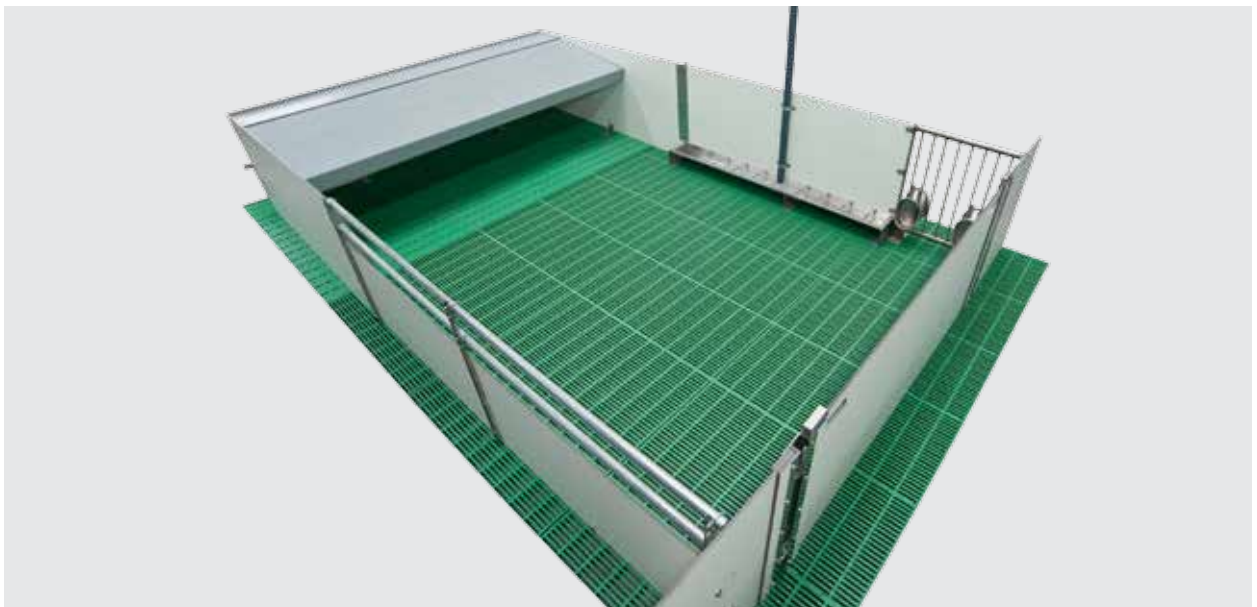


Finisher and piglet pens

Hygiene all down the line. TRESPA® is a stable and compact composite of wood and plastic without cavities. This prevents the penetration of bacteria (e.g. salmonella) or fly larvae into the pen walls.



Finisher pen type TRESPA®



Piglet pen type TRESPA®

Contact fence and piglet cover

Good connection to the neighbors. Contact fences promote communication between animals in different pens. The piglet cover keeps the animals warm and protects them from cooling down.



Contact fence



Pen with piglet cover and contact fence



Gate locks for piglet and finisher pens

Simple opening of the pens. With our gate locks the pen gates can be opened quick and easy.



Push lever for easy opening of the gate



One-handed lock of gate at the piglet pen

House equipment



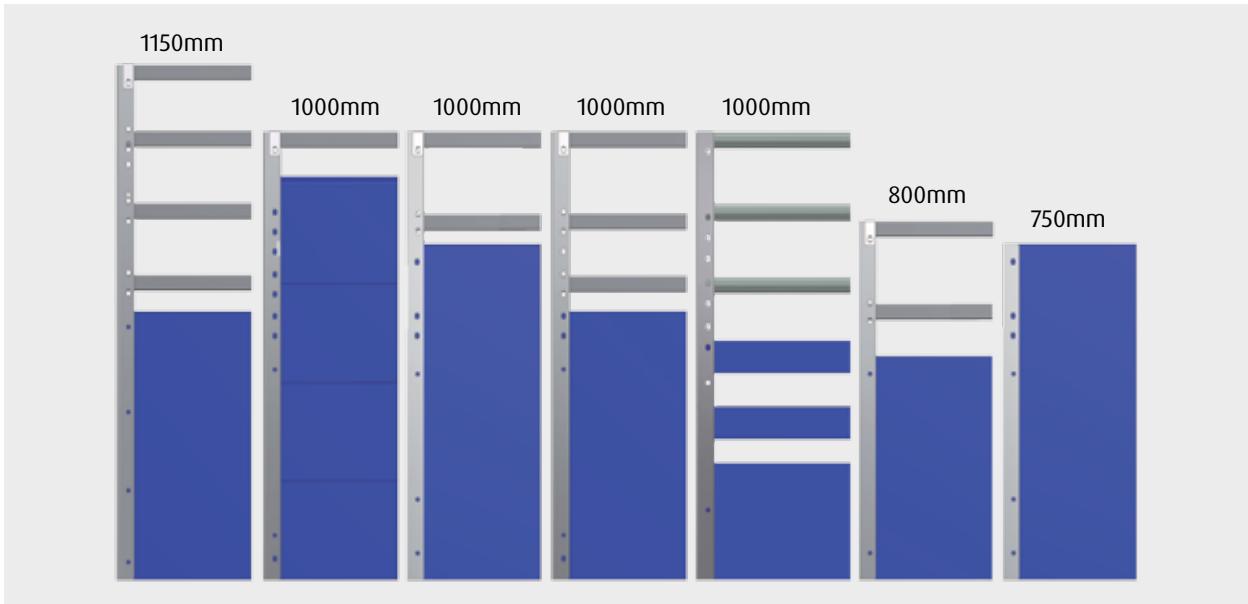
Gate lock DK



Easy-up gate lock

Pen walls for piglets and finishers

Robust and strong. Our robust pen walls can be installed quickly and easily. Due to their smooth surface, injuries to humans and animals are avoided.



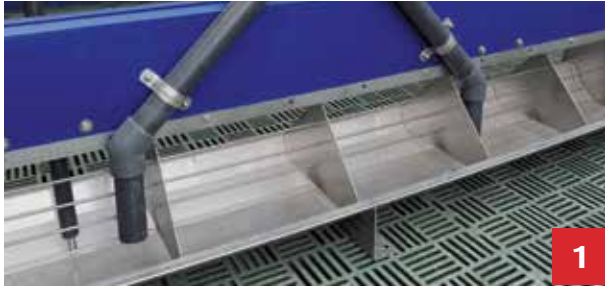
Features

- Robust planking made of hard PVC profile boards
- All connections are screwed, therefore no rusting welds
- Clean processing, no ridges. Cleanly edged and accurate due to laser technology
- Good and detailed documentation, therefore simple assembly and quick self-installation possible



Piglet and finisher troughs

Quality by WEDA. Our troughs are manufactured in our company headquarters in Lutten and offer the highest degree of hygiene safety.



1



2



3



4

- 1 Sensor trough for piglets with grate
- 3 Sensor trough for piglets

- 2 Long trough for finishers
- 4 Sensor trough for finishers

Features

- Highest degree of hygiene safety
- No sharp edges to avoid injuries
- Production at WEDA, troughs must only be screwed to the floor on site
- Can be equipped with feeding placor central divider
- 1.5mm sheet metal
- Riveted, not welded

Drinkers for piglets and finishers

Water supply at its best. Our stainless steel drinkers enable an optimal water supply for your animals.



Nipple drinker



Bowl drinker

Features

- Stainless steel drinkers in various sizes



Flooring for piglets

Always the right floor. A good floor is important for the stability and well-being of your animals. In addition heating plates made of plastic or polymer concrete are available.



WEDA piglet floor (open and partially closed)



WEDA floor

Features piglet floor

- Own production
- Significantly higher load capacity
- Does not start to droop even after years
- Made of PE
- Very quiet



3 WEDA piglet floor
4 Conventional floor

Farrowing area

Protection for your piglets. With our piglet protection cages, your piglets are protected from being squashed by the sow. The following pages show different types from our product portfolio.



Piglet protection cage AK: Suitable for both diagonal (30°) and straight arrangement. Can be mounted unsupported or supported.



Piglet protection cage AKH: Mounting is possible free-standing, on the wall or on single or double frames.



Farrowing area

Well-being for both sow and piglets. Robust materials make our AKD piglet protection cage robust and solid. The specially shaped feet on the back provide additional protection for your piglets.



Piglet protection cage type AKD



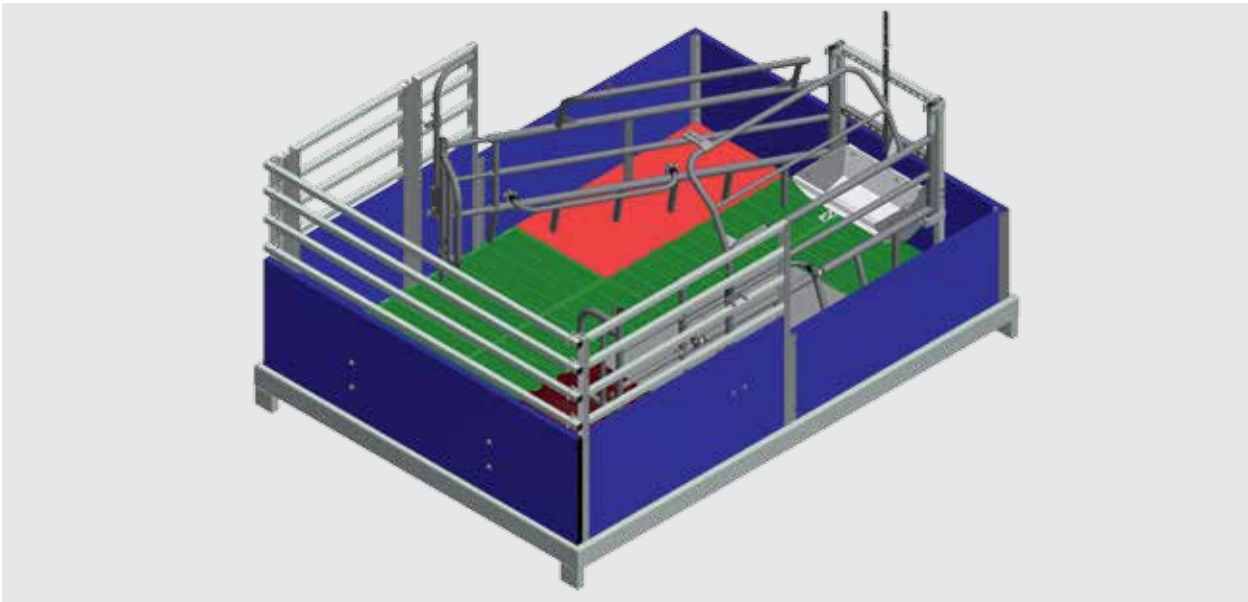
Piglet protection cage type AKAS

Freedom farrowing systems

More room for sow and piglets. Our freedom farrowing systems offer considerably more space for the sow than conventional systems. The triangular shape and the fresh nose ventilation prevent the sow from rolling and protect the piglets from being crushed by the sow.



Freedom farrowing system with straight arrangement

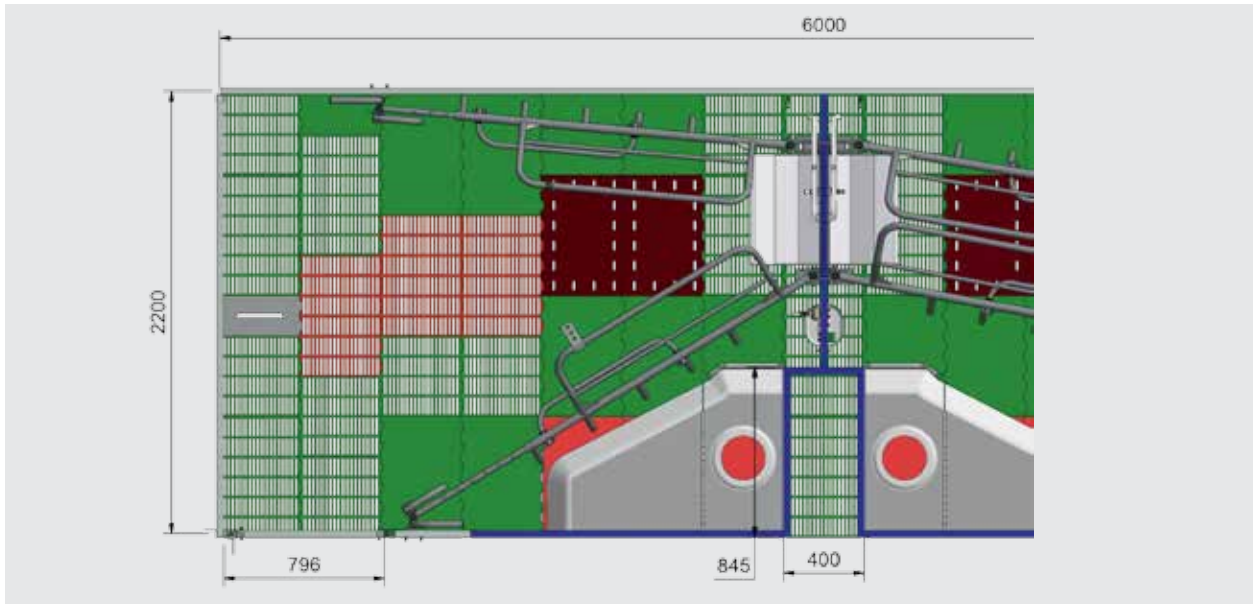


Freedom farrowing system with straight arrangement

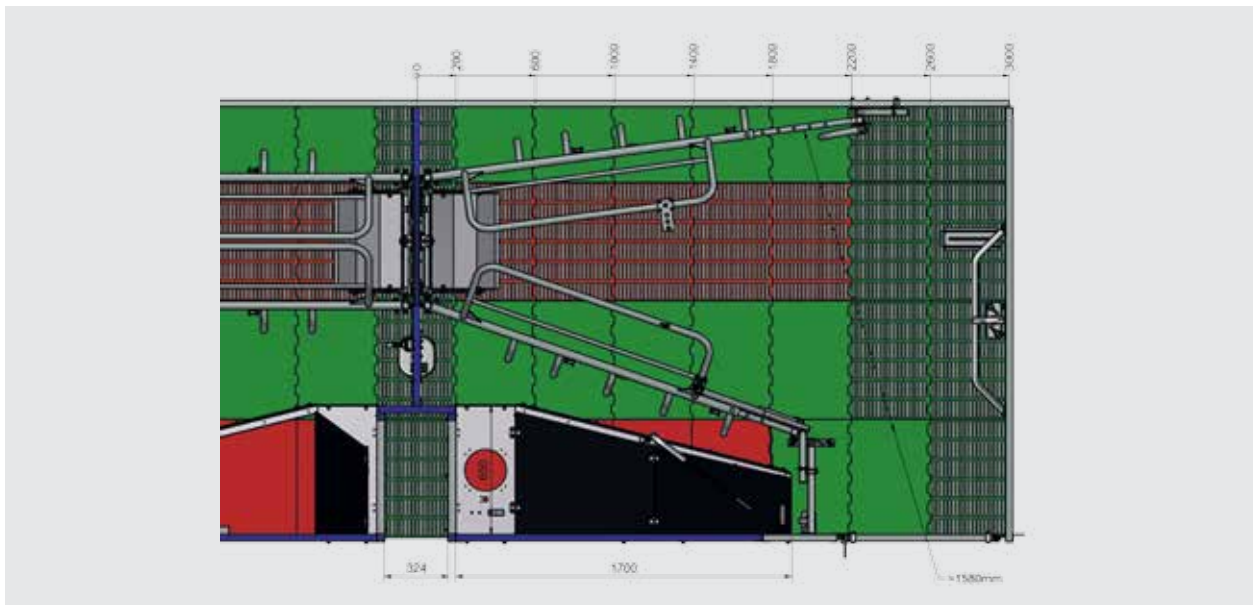


Freedom farrowing systems

Safe with FiT. Our FiT pen is equipped with a service corridor, which allows the staff secure access to all relevant work areas within the pen, without having to enter the pen itself.



Freedom farrowing system FiT with service corridor (slight diagonal arrangement)



Freedom farrowing system FiT with service corridor (straight arrangement)

Freedom farrowing systems

Flexibility. The piglet protection cages in our freedom farrowing systems can be adjusted flexibly. When working in the pen, it is therefore also possible to temporarily secure the sow.



In our pens, sow and piglets have a lot of space.



The piglet protection cage can be easily opened and attached to the pen walls.

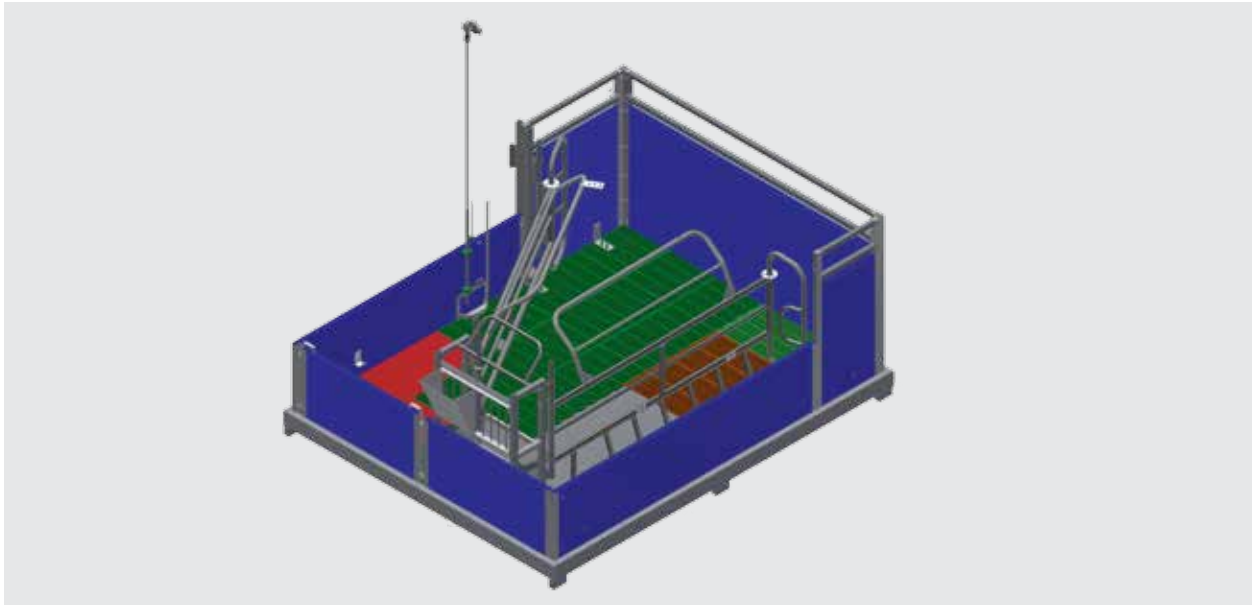


The freedom farrowing system with diagonal arrangement offers plenty of space behind the sow and enables optimal birth assistance.



Freedom farrowing systems

Animal welfare. Our freedom farrowing systems offer a lot of space to move around in the pen. The essential work areas are positioned in such a way that they can also be easily accessed from the corridor.



The low walls of the MoreFlex pen and a fixed side part ensure high stability of the pen and a good overview. Due to its structure, it provides good access to both trough and animal.



In this pen the trough is placed at the front of the wall and the nest at the corridor, so that it can be easily operated and reached by the farmer. The partly closed floor is a country-specific requirement.

Freedom farrowing systems

Special pen construction. Our freedom farrowing systems offer the animals as much space as possible to move inside the pen. At the same time our systems provide a maximum of safety for the stable personnel.



A swivel grate creates a large open space of 6.4m² for the animals. The special pen construction and a new locking system create a high degree of security in the pen.

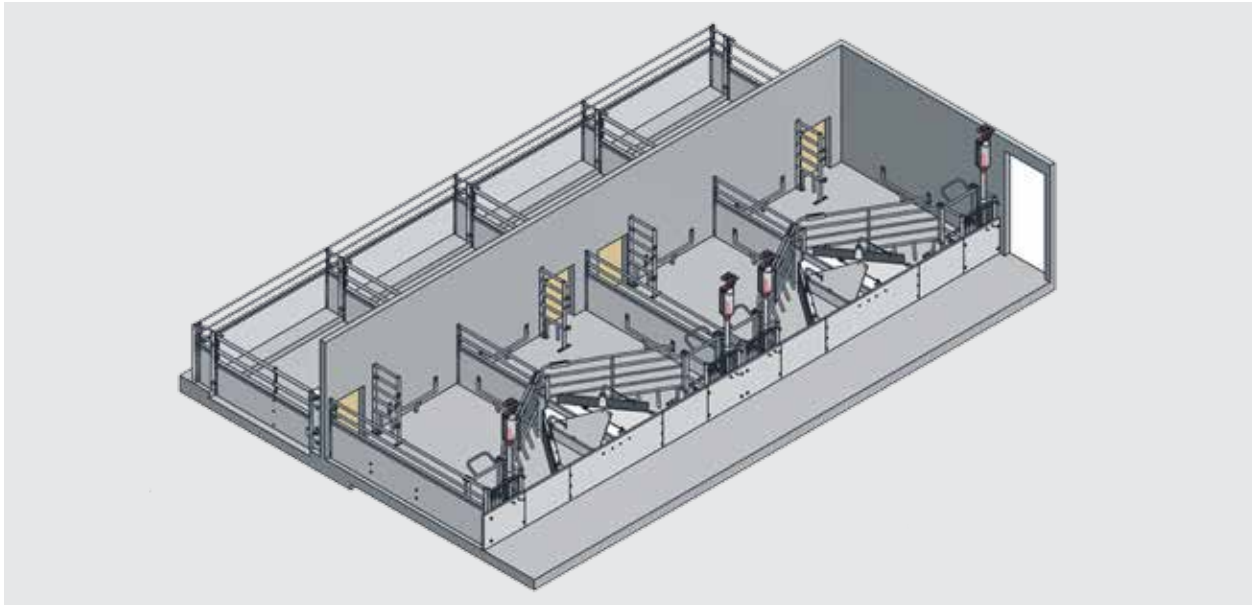


Reconstruction of different pen types

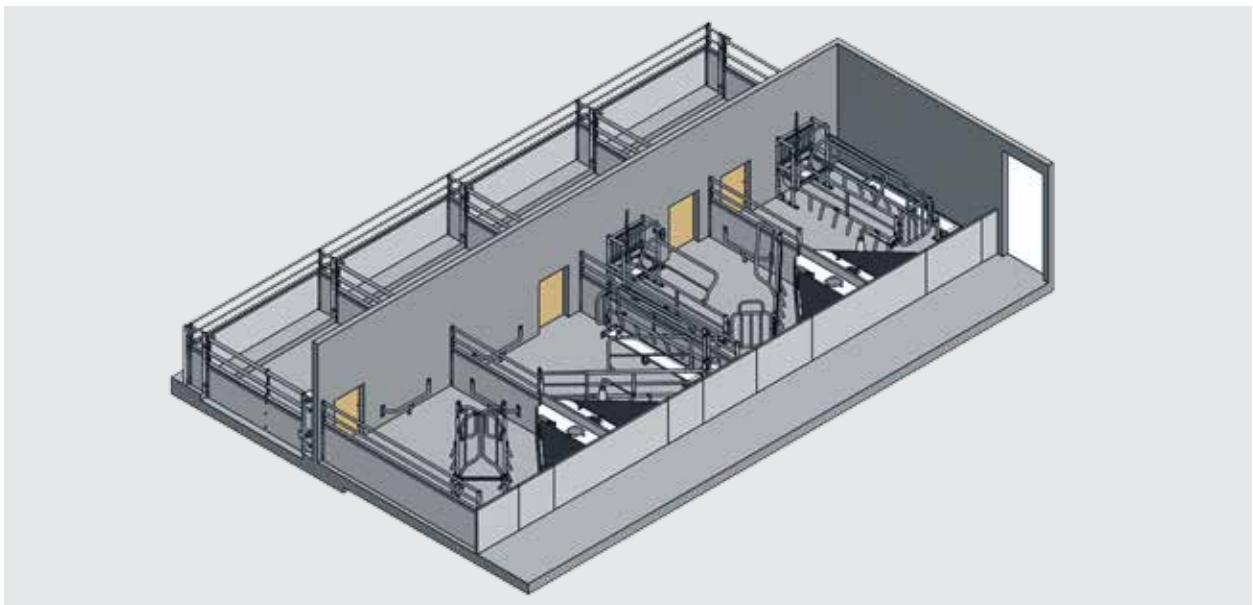


Pens for increased animal welfare requirements in the farrowing area

Free movement for sow and piglets. In the following pages show pens which we have designed for farrowing with increased animal welfare requirements.



Animal welfare pen Vario Flex with short term fixation



Animal welfare pen with piglet protection cage. Additional long troughs for piglets up to 30 kg are available.

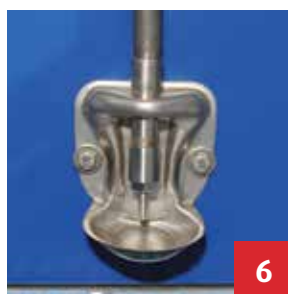
Troughs and drinkers for the farrowing area

Stable and durable. Our troughs for farrowing are made of robust stainless steel and/or PVC and are ideal for the use directly at the sow. Our drinkers reliably supply your animals with water.



- 1 PVC trough
- 3 Trough type AKD

- 2 Stainless steel swivel trough
- 4 Stainless steel trough



- 5 Trough sprayer
- 6 Bowl drinker (piglet)
- 7 Ball bite drinker

Aqua-Level



Piglet nest covers for the farrowing area

Where the piglets feel good. The piglet nest offers your suckling piglets protection and warmth. At the same time, it reduces energy losses in the pig house. If required, an infrared lamp can be integrated into the piglet nest cover.



- 1 Standard piglet nest cover
- 2 Piglet nest cover type D



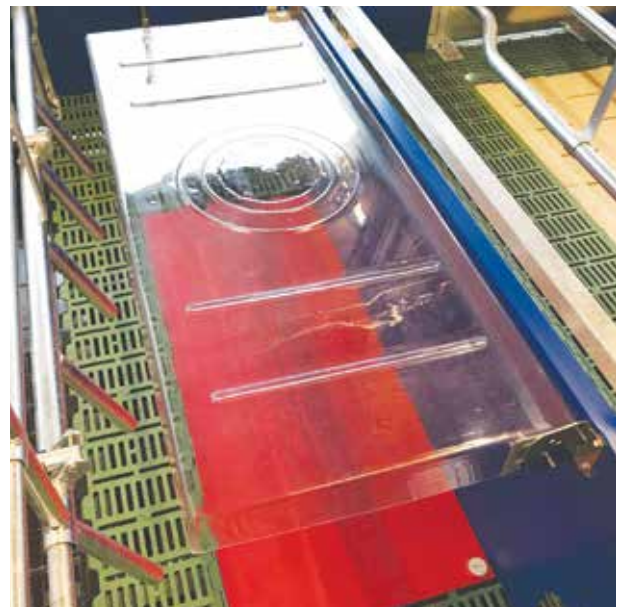
Piglet nest cover, type mobile



Piglet nest with catching device

Features

- Mountable on right and left side
- Simple operation
- Low weight
- Easy cleaning
- Installation of infrared lamp possible
- Custom dimensions are available



Piglet nest cover, type transparent

Flooring for the farrowing area

Flooring as required. We would be happy to create an individual floor plan for you, considering the legal requirements as well. Of course, we can also supply you with the appropriate beams either made of GRP or type galvanized.



Our floors ensure high stability of the sow



The flooring in the pen is skid-resistant, so that the sow can move freely and safely.



Flooring for the farrowing area

Flooring as required. We would be happy to create an individual floor plan for you, considering the legal requirements as well. Of course, we can also supply you with the appropriate beams either made of GRP or type galvanized.



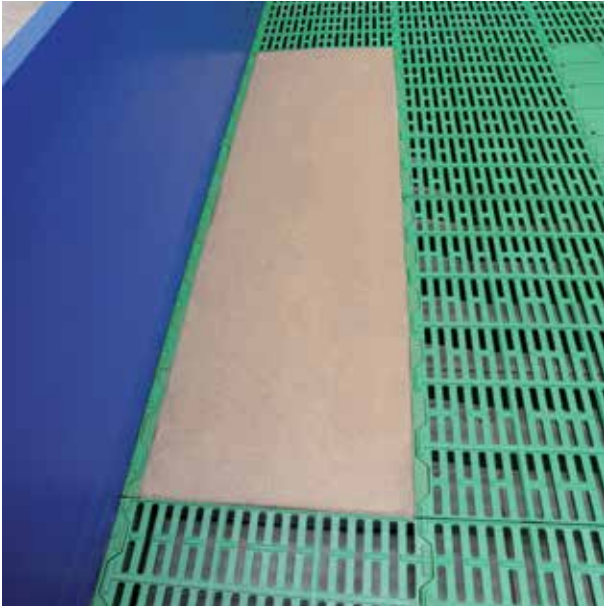
Floor plan Asia: cast grid under the sow, plastic grid in the rest of the pen.



Floor plan: concrete under the sow, plastic grid in the rest of the pen.

Flooring for the farrowing area

Always warm. Our heating plates, made of polymer concrete and PVC, offer comfortable warmth for the piglets in the farrowing area.



Polymer concrete heating plate



PVC heating plate

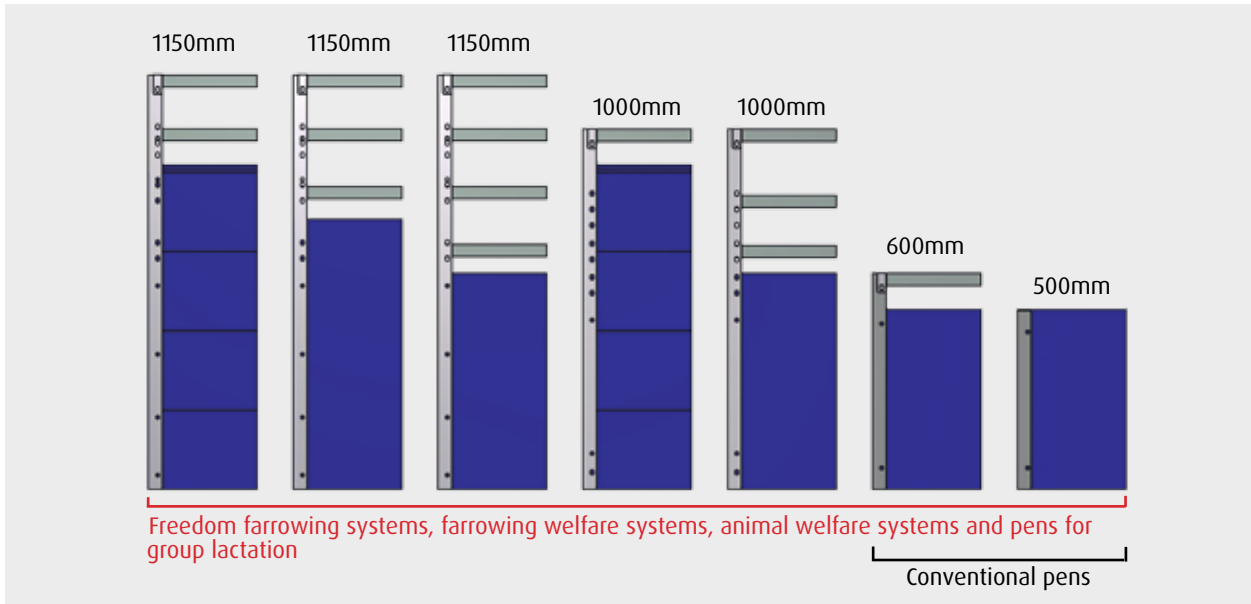
Features

- Made of polymer concrete or PVC
- Heating is possible with hot water or electricity
- Animal-friendly surface and easy cleaning



Pen walls for the farrowing area

Your wish is our command. Our pen walls are manufactured according to your wishes, in terms of height, color and material.



Features

- Robust planking made of rigid PVC profile boards or TRESPA®
- All connections are screwed, therefore no rusting welds
- Clean processing, no ridges. Cleanly edged and accurate due to laser technology
- Good and detailed documentation, therefore simple assembly and quick self-installation possible

Breeding stalls for the service area

Breeding stalls for every demand. In the following we will give you an overview of the breeding stalls in our product portfolio.



The breeding stall type T is inexpensive and available in sizes of 2.30m and 2.50m.



The hinged door can be locked in three positions.



Raised stainless steel trough



Breeding stalls for the service area

Breeding stalls for every demand. In the following we will give you an overview of the breeding stalls in our product portfolio.



Breeding stall type TH with western gate

House equipment



Breeding stall type TPH with P-shaped gate. This allows good access to the sow.



Front of stalls TH and TPH

Breeding stalls for the service area

Free access to the sow. Breeding stall type TD offers free access to the sow, as the upper pipes are located towards the front end of the stall. The front can be equipped with front exit (TD1) or alternatively with tubes (TD2).



The breeding stalls type TD can be set individually in width between 600 and 700mm.



Front exit (for type TD1)



Western gate



Self-catching stalls for group management

One breeding stall for two production areas. Our self-catching stalls meet the legal requirements for the gestation area but can also be used without problems in the service area.



SF1 & SF3

www.youtube.com

Channel: WEDA Dammann & Westerkamp GmbH



Breeding stall type SF1 with self-closing swivel door. The stalls can be locked by a special springless mechanism.

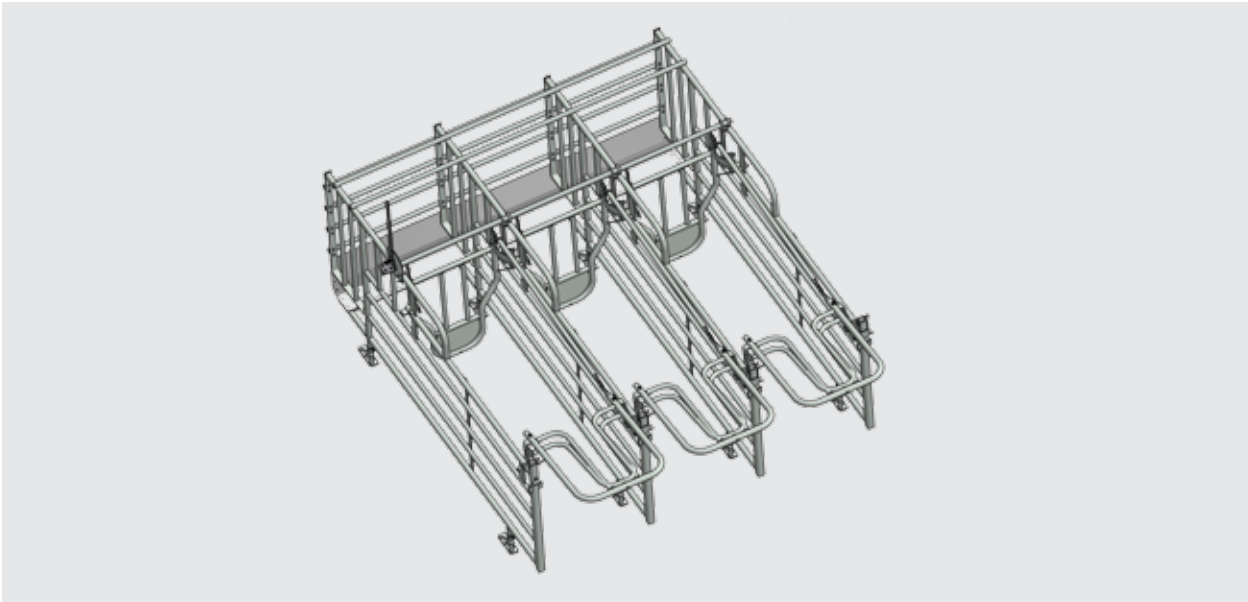
House equipment



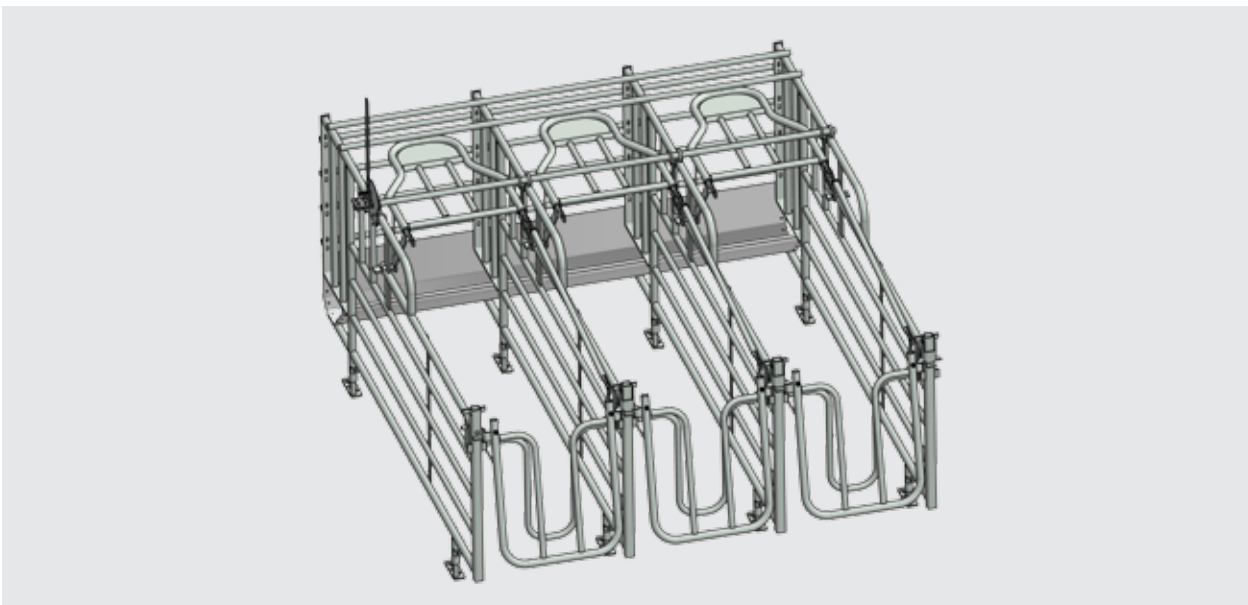
With its lever technology, the ergonomic design of the SF3 ensures easy function of the opening and closing system.

Self-catching stalls for group management

Save at all times. The wip function closes the breeding stall behind the sow after she has entered. As a result the sow is protected from fellow sows.



The large opening in the breeding stall allows easy entry for the stable staff. In addition, it can be used to inseminate the sow.



The breeding stall has no pipes in the upper part. This ensures good access to the sow.



Barriers for group management

User-friendly and reliable. Our barriers for group management are smooth-running, stable and user-friendly. They can be individually adapted and are therefore suitable for every stable.



Single sided barrier



Double sided barrier

Features

- Single-sided, double-sided or in western gate version
- Smooth-running and user-friendly
- Fatigue-free work
- Robust
- Cost-effective
- Suitable for every stable
- Individually adaptable



Western gate

Alley lock and boar pen

In the right place at the right time. The alley locks keep the boar within a fixed range of the sows. If the boar is not on duty, our robust boar pen is exactly the right place for him.



The alley lock can be mounted between the wall and the breeding stall or between two opposite breeding stalls.



Our boar pen is fully designed to meet the needs of the boar.



Group pen for sows

Being in pig together. In our group pens your sows in pig spend time with their fellow sows until they are moved to the farrowing area.



Group Management
www.youtube.com
Channel: WEDA Dammann
& Westerkamp GmbH



The group pens offer a lot of space

House equipment



The sows spend the time of their gestation together. This promotes animal welfare.

Troughs and drinkers for the service and gestation areas

Robust and hygienic. The WEDA troughs made of PVC or stainless steel are not welded and therefore very durable. With our drinkers, your sows are always optimally supplied with water in the service and gestation area.



1



2



3



4

1 Trough for breeding stall
3 Trough for breeding stall

2 Single trough for sows
4 Double trough for sows



5



6



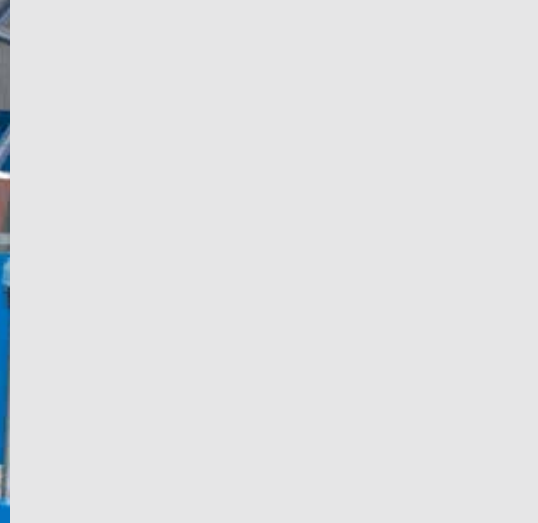
7



8

5 Trough sprayer with clamp mounting
7 Ball bite drinker

6 Nipple drinker
8 Aqua-Level



Environmental control
technology



Environmental control technology..... 98-123

Ventilation systems	100
Climate control	114
Ceilings.....	115
Supply air valves	116
Fans.....	117
Vent pipes.....	118
Heating	120
High pressure cooling system.....	121
Pad climate system	122

Liquid feeding

Dry feeding

Electronic sow feeding

House equipment

Environmental control technology

Liquid manure treatment



Ventilation systems

Jet ventilation. Fresh air enters the compartment via the wall supply air elements mounted in the side walls.

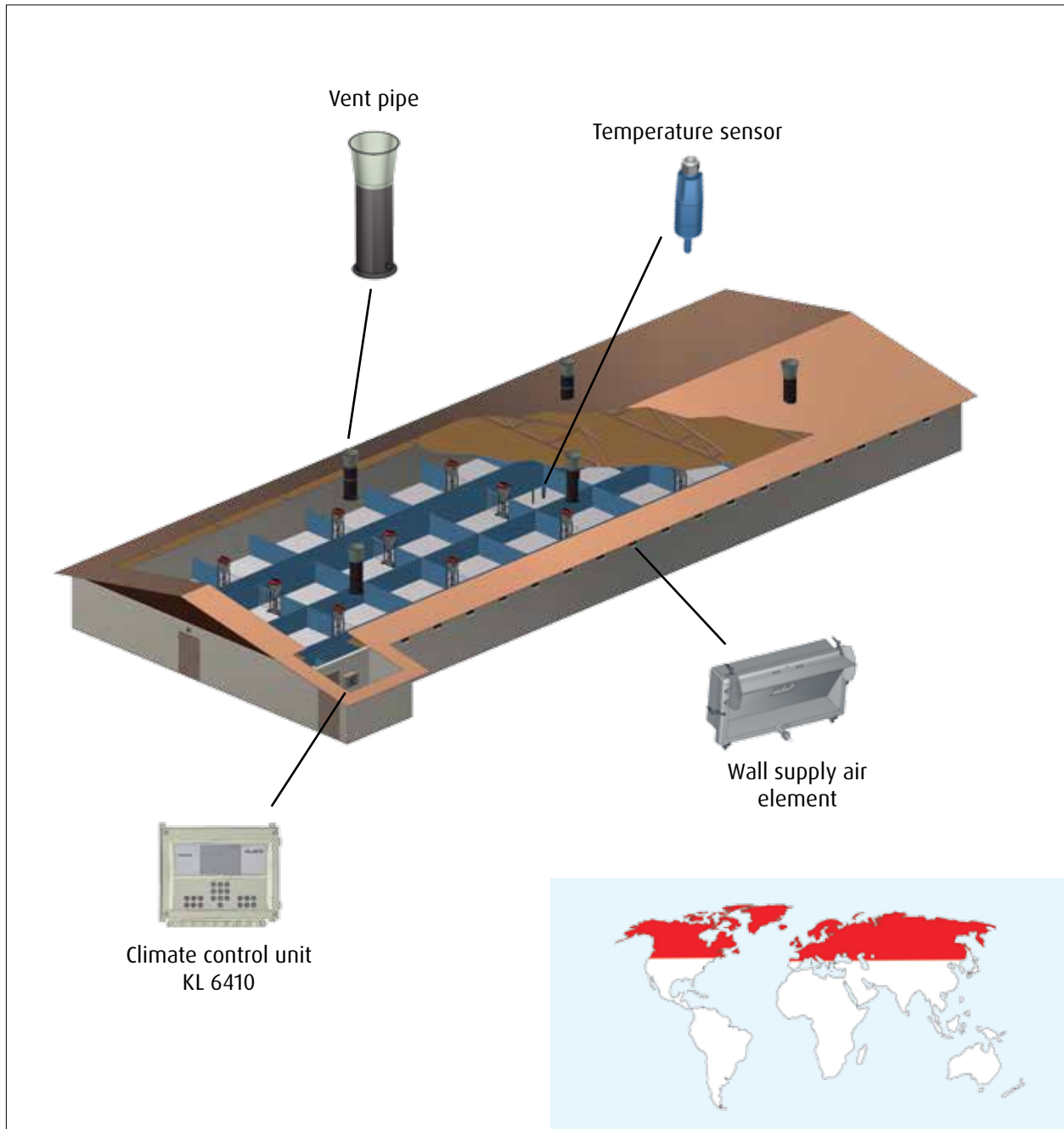
The countries in which jet ventilation is possible are colored red in the map below.



Jet ventilation

www.youtube.com

Channel: WEDA Dammann & Westerkamp GmbH



Explanation jet ventilation with wall supply air elements:

The fresh air enters the compartment via the wall supply air elements mounted in the side walls. The supply air elements are controlled by a climate computer, which adjusts the position of the flaps so that the required speed of the supply air is reached.

The maximum penetration depth for this type of ventilation is 12m (one-sided).

Ventilation systems



Jet ventilation. This type of ventilation is suitable for use in finishing houses and in gestation areas.

Jet ventilation
www.youtube.com
Channel: WEDA Dammann
& Westerkamp GmbH



Ceiling air element



Wall supply air element



Jet ventilation

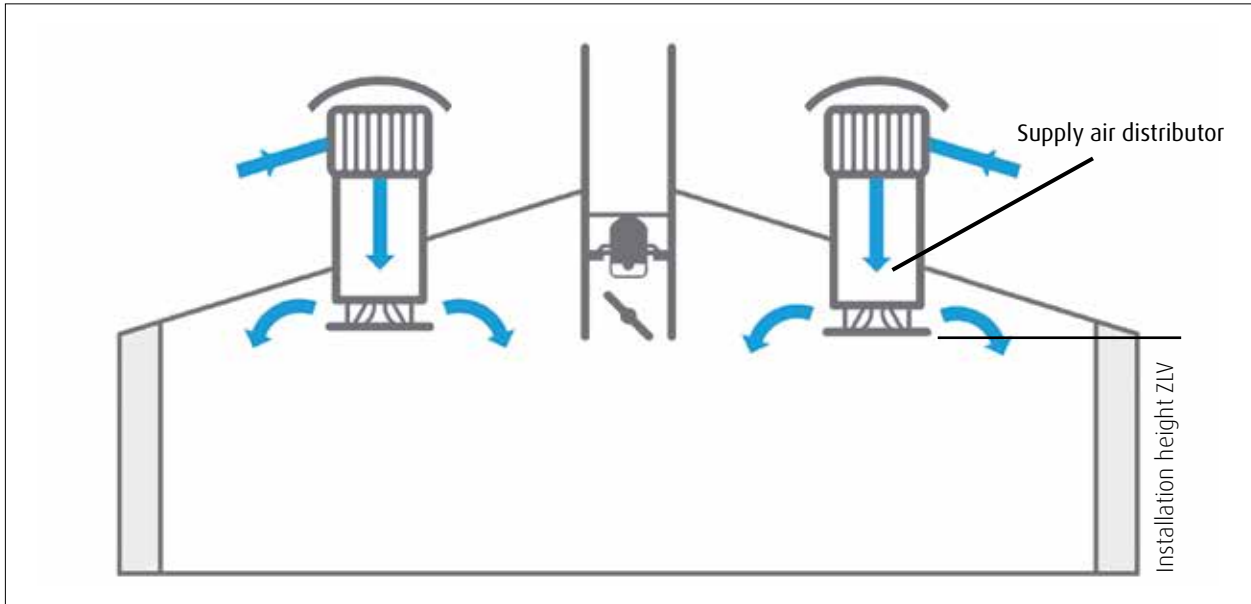


Ventilation systems



Supply air distributor. With this type of ventilation, the supply air flows into the compartment via the supply air distributor (ZLV). The countries in which ventilation by means of supply air distributors is possible, are colored red in the map below.

Supply air distributor
www.youtube.com
Channel: WEDA Dammann
& Westerkamp GmbH



Ventilation with supply air distributor



Explanation of ventilation with supply air distributor:

With this type of ventilation, the supply air flows into the compartment via the supply air distributor. Due to the specially shaped nozzles below the supply air distributor, the fresh air is distributed evenly in the compartment.

To increase the distribution radius of the air, a fan can be installed on the underside.

Countries where ventilation with supply air distributor is possible (red)

Ventilation systems

Supply air distributor. This kind of ventilation is particularly well-suited for use in monoblocks.



Supply air distributor
www.youtube.com
Channel: WEDA Dammann
& Westerkamp GmbH



Ventilation with supply air distributor



Ventilation with supply air distributor

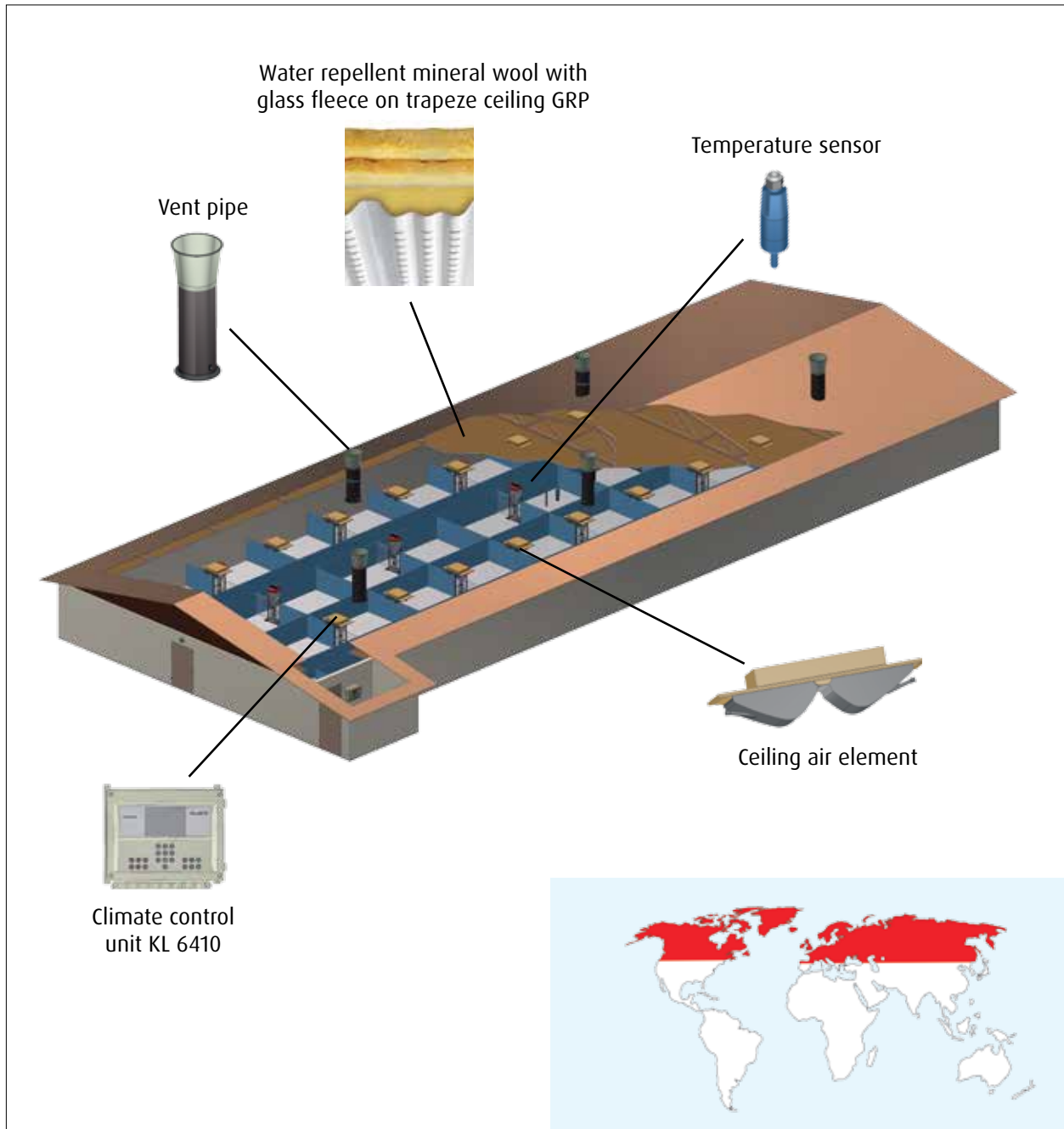


Ventilation systems

Diffuse and combi diffuse ventilation. The combi diffuse ventilation works with perforated ceiling and ceiling air elements. The countries in which diffuse and combi diffuse ventilation is possible are coloured red in the map below.



Diffuse & combi diffuse
www.youtube.com
Channel: WEDA Dammann
& Westerkamp GmbH



Explanation for diffuse and combi diffuse ventilation with ceiling air elements:

Diffuse ventilation: the supply air enters the insulated attic via the eaves side. From there it flows over the perforated ceiling into the compartment, all the way to the animal. This type of ventilation ensures even air distribution.

Combi diffuse ventilation with ceiling air element: Works like the diffuse ventilation. However, the additional ceiling air element can increase the air flow rate in the summer and reduce it accordingly in the winter.

Ventilation systems

Diffuse and combi diffuse ventilation. Diffuse and combi diffuse ventilation is one of the exhaust air-controlled ventilation systems. With exhaust air-controlled systems, any amount of air can flow into the stall, but only a certain, controlled amount flows out again.



Diffuse & combi diffuse
www.youtube.com
Channel: WEDA Dammann
& Westerkamp GmbH



Diffuse ventilation



Combi diffuse ventilation



Ventilation systems

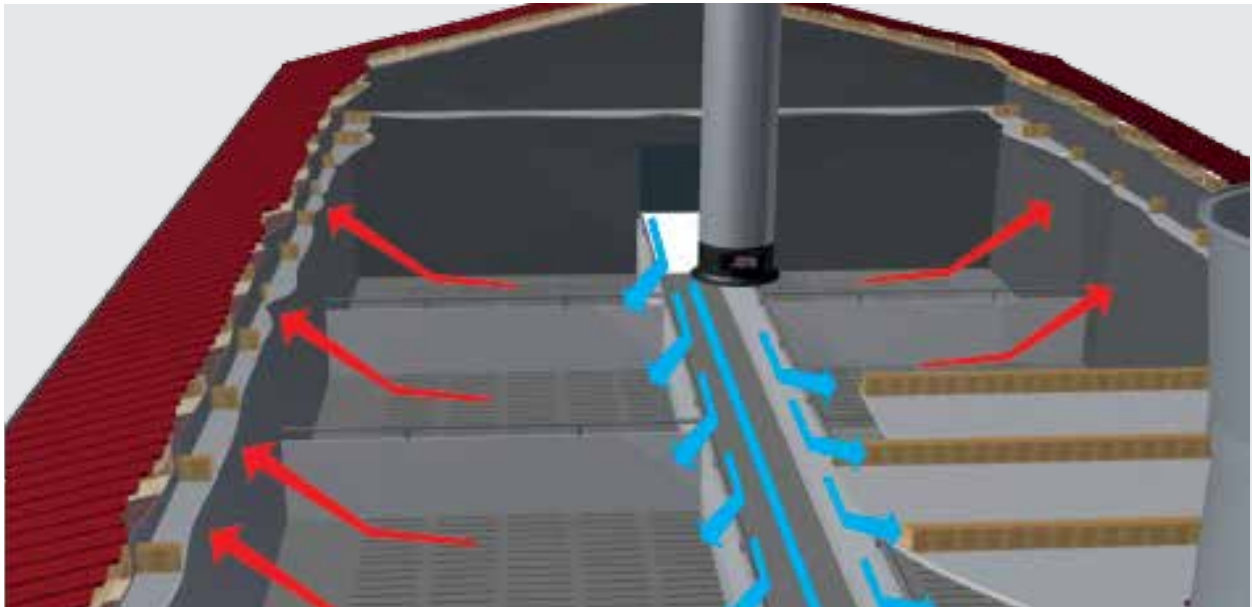
Door passage ventilation. With this type of ventilation the fresh air from the entrance area of the compartments or the central aisle will be used.



Door passage ventilation

www.youtube.com

Channel: WEDA Dammann & Westerkamp GmbH



Operating mode of door passage ventilation



Countries where door passage ventilation is possible (red)

Explanation of door passage ventilation:

The supply air flows into the attic via the eaves side and reaches the compartment via the central aisle. From there it flows along the feed aisle and over the pen walls, all the way to the animal. Requirement for this type of ventilation is a pen with 1m in height and closed on the side of the aisle. The door passage ventilation is well suited for smaller compartments with a maximum compartment depth of approx. 15m and a pen depth of approx. 4.5m.

Ventilation systems

Door passage ventilation. The door passage ventilation system is one of the exhaust air controlled ventilation systems. With this type of system, any amount of air can flow into the pig house, but only a certain controlled amount flows back out again.



Door passage ventilation

www.youtube.com

Channel: WEDA Dammann
& Westerkamp GmbH



Door passage ventilation

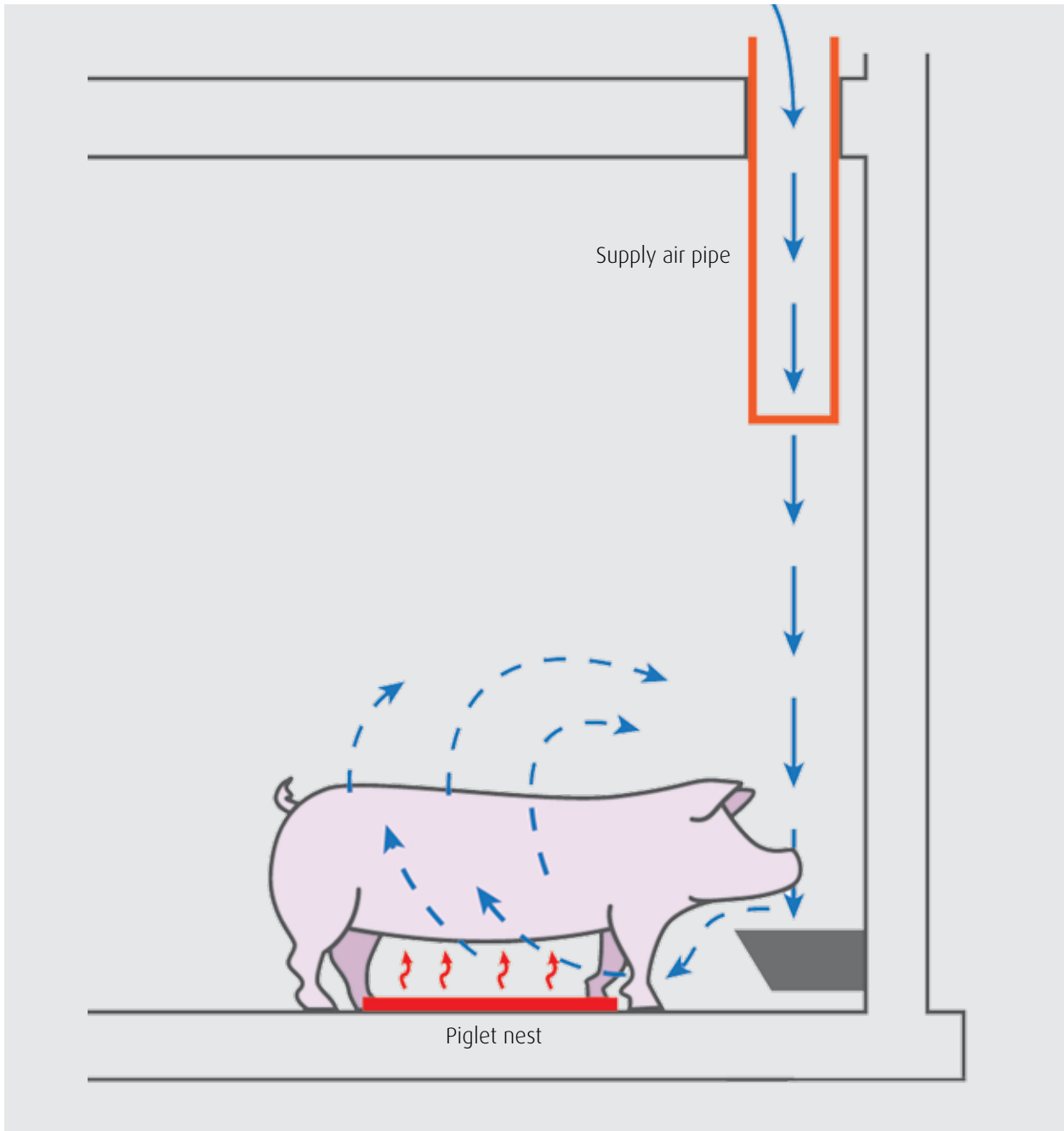


Door passage ventilation



Ventilation systems

Fresh nose ventilation. This ventilation system is installed in the sow area and the fresh air is transported directly to the nose of the sow, from where it is distributed and heated.



Explanation for fresh nose ventilation:

In the fresh-nose ventilation system, the air from the insulated attic is guided directly to the sow's nose via a pipe placed above the sow. The supply air falls into the trough and slowly flows over into the sow's lying area. There the air is heated by the body heat of the sow and is then transported to the piglet nest.

Ventilation systems

Fresh nose ventilation. The system can be combined with a perforated ceiling which is used in the winter, while the supply air pipes remain closed. This type of ventilation is particularly useful in cold regions.



Countries in which fresh nose ventilation is possible (colored red).



Fresh nose ventilation

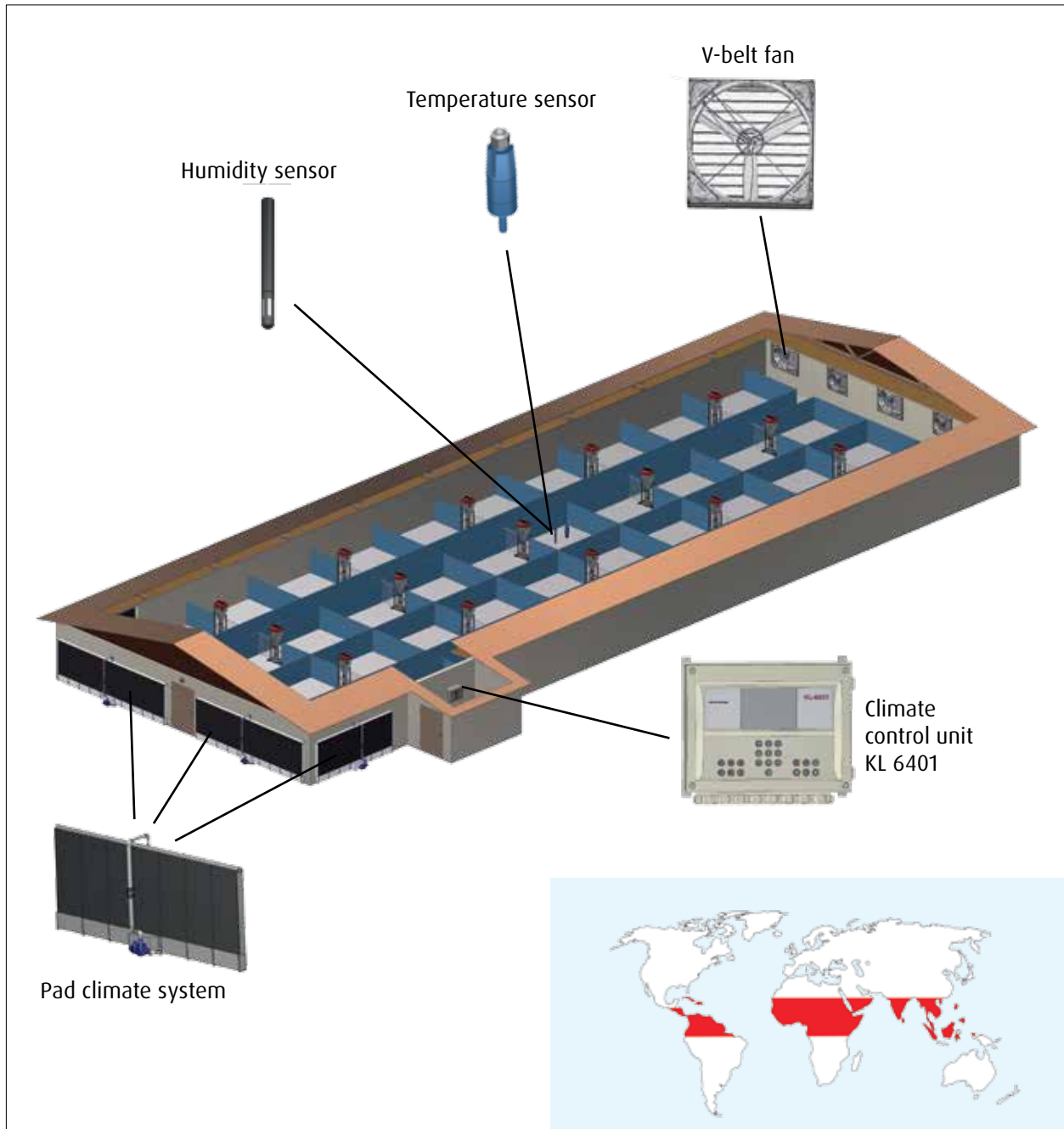


Ventilation systems

Tunnel ventilation. Tunnel ventilation is used in tropical and subtropical countries. All countries where tunnel ventilation is possible are coloured red on the map below.



Tunnel ventilation
www.youtube.com
Channel: WEDA Dammann
& Westerkamp GmbH



Explanation for tunnel ventilation:

Tunnel ventilation works with a pad climate system. V-belt fans are mounted at the rear of the pig house. In addition cooling pads, soaked in water, are attached to the outside of the building. The V-belt fans suck the warm air from outside through the pads into the pig house. The pads cool down the warm outside air by means of humidification. The cool air reaches the animals and the „used“ air in the pig house is drawn out at the end of the building.

Ventilation systems

Tunnel ventilation. For this ventilation system, special open pen systems must be installed in the pig house. Further information can be found in the chapter house equipment.



Tunnel ventilation
www.youtube.com
Channel: WEDA Dammann
& Westerkamp GmbH



Pad climate system



Tunnel ventilation (fan with cone)



Ventilation systems

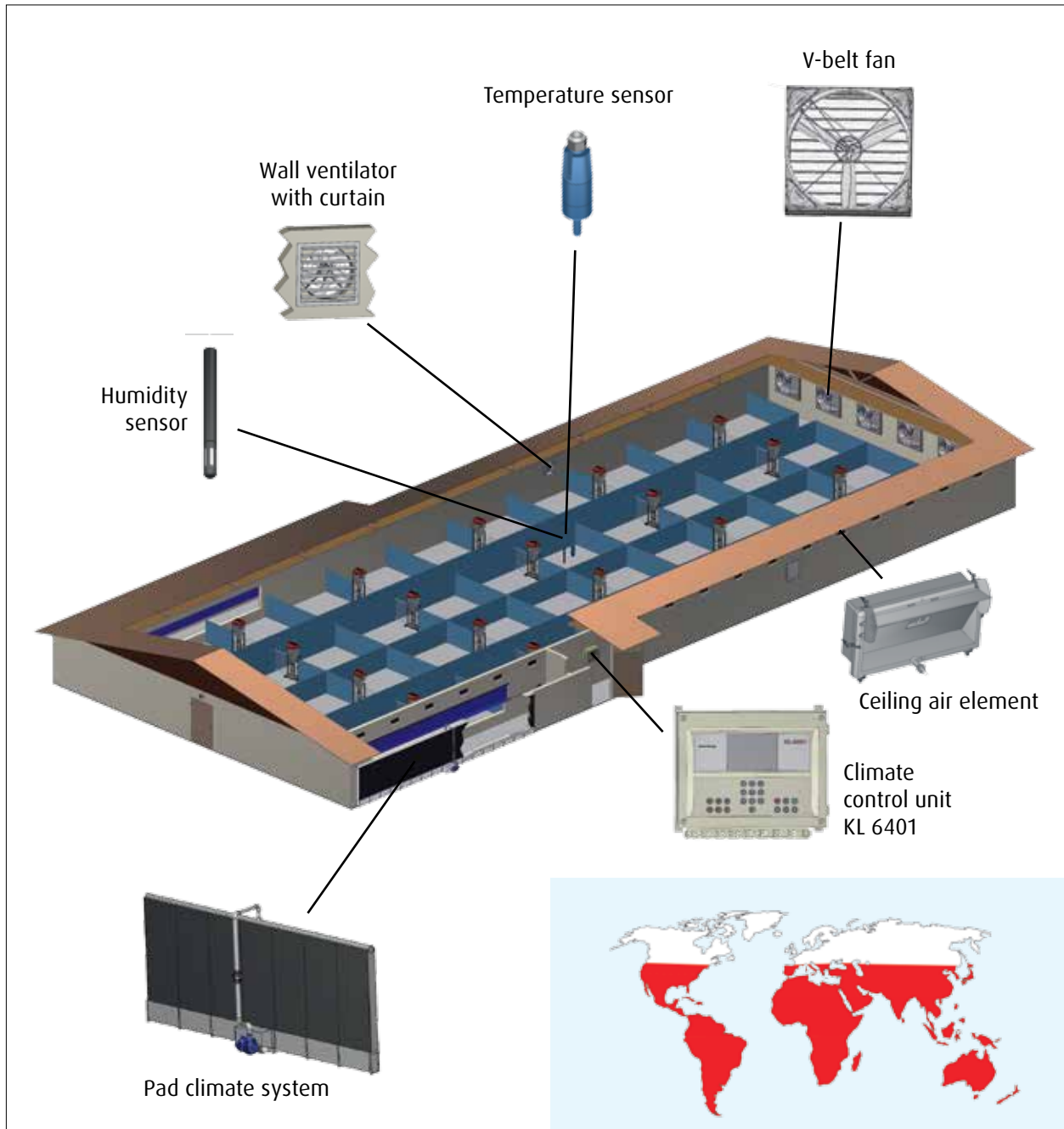
Combi tunnel ventilation with ceiling air elements or wall valves. With this ventilation system tunnel ventilation is combined with jet ventilation. The countries in which combi tunnel ventilation is possible are coloured red in the map below.



Combi tunnel ventilation

www.youtube.com

Channel: WEDA Dammann & Westerkamp GmbH



Explanation for combi tunnel ventilation with ceiling air elements or wall valves:

Two systems are used for this type of ventilation: tunnel ventilation (see page 110) and jet ventilation (see page 100). In the summer the ceiling air elements or wall valves are closed and the pig house is supplied with fresh air by tunnel ventilation. In the winter, when the temperatures are lower, the shutters in front of the fans are closed, the ceiling air elements or wall valves are opened, and the pig house is ventilated via jet ventilation.

Ventilation systems

Combi tunnel ventilation with ceiling air elements or wall valves. This type of ventilation is suitable for areas where there are high temperature fluctuations between day and night.



Combi tunnel ventilation

www.youtube.com

Channel: WEDA Dammann
& Westerkamp GmbH



Combi tunnel ventilation



V-belt fan



Combi tunnel ventilation



Climate control

Fresh air in your pig house. Our climate controls reliably control the climate in the compartments of your pig house. Both, the temperature in the pig house and the degree of ventilation, can be read off at a glance.



CBA



KL64 series

Features

CBA and CB (not shown)

- Simple operation
- Ventilation and temperature at a glance
- Min. and max. temperature alert

KL64 series

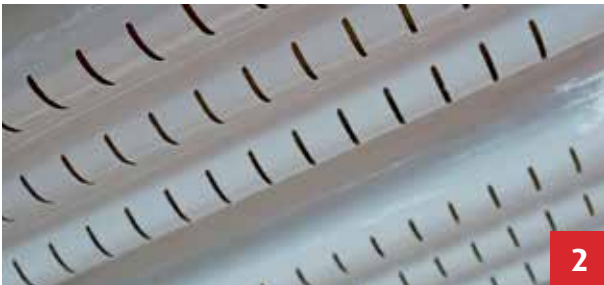
- Large display with comprehensible symbols
- Adjustable growth curves ensure that the climate adapts to the age of the animals
- Accurate climate control through AQC unit
- Central control function for ventilation and heating
- Modular extension possible

Ceilings

The ideal ceiling and wall covering for your pig house. Our product portfolio includes ceilings for every need. Starting with ventilation ceilings made of expanded PS rigid foam, all the way to aluminum and insulating ceilings.



1 Perforated ceiling



2 Trapeze ceiling



Aluminum ceiling

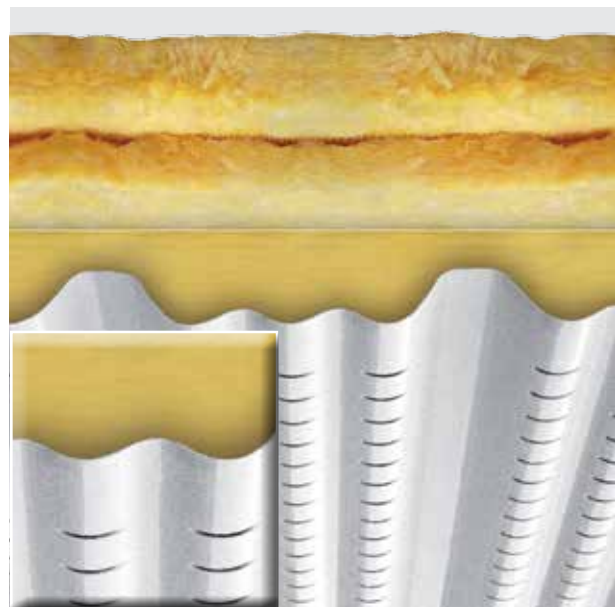
Features

Diffuse ceiling

- Coated or uncoated
- Slotted and profiled
- Steady distribution of supply air
- Good thermal efficiency
- Made of glass-fibre reinforced polyester or aluminum (fireproof)
- Enables very good air distribution due to mineral wool coating. Also in large compartments
- Smooth, easy to clean surface

Insulated ceilings (not shown)

- Insulation keeps warm air in the pig house
- Easy cleaning due to smooth surface



Cross-section of trapeze ceiling with insulation



Supply air valves

Precise and simple. Our ceiling supply air valves and wall supply air valves enable precise control of the supply air. The valves are suitable for every type of animal and installation situation.



1



2



3



4

1 & 3 Ceiling supply air valves (single & double)

2 & 4 Wall supply air valves

Features

Ceiling supply air valves

- Available as single and double version
- Good air distribution with minimum air rate
- High capacity at maximum air rate
- Energy efficient ventilation with minimum resistance
- Simple installation in flat pig house ceiling
- Can be combined with diffuse ventilation for summer air rate
- Smooth surfaces and easy to clean

Wall supply air valves

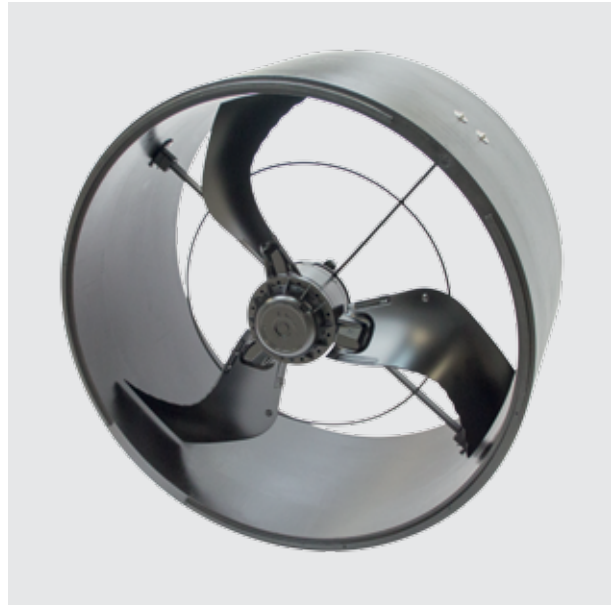
- High insulation value (reduction of condensation)
- Robust
- No suspended ceiling required
- Cooler supply air, as air comes directly from outside
- Cost-effective, as no suspended ceiling is required
- Smooth surfaces and easy to clean

Fans

Good climate for your animals. With the help of our reliable chimney and wall fans, you can always ensure a good climate in your pig house.



Wall fans



Chimney fan (built into vent pipe)

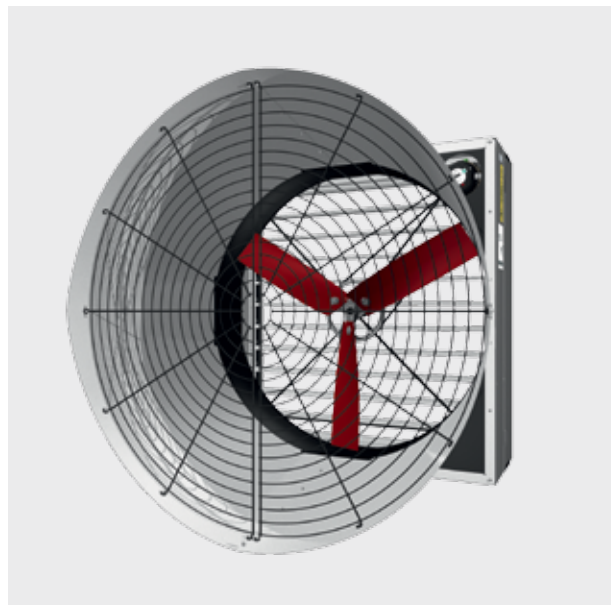
Features

V-belt fans

- Highest air output at favourable purchase costs
- Economical working
- Very low energy consumption with high efficiency
- Minimum noise level
- High air output
- Ideally suited for tunnel ventilation
- Optionally with cone

Wall and chimney fans

- Adjustable
- Low energy consumption
- Quiet
- Easy to assemble

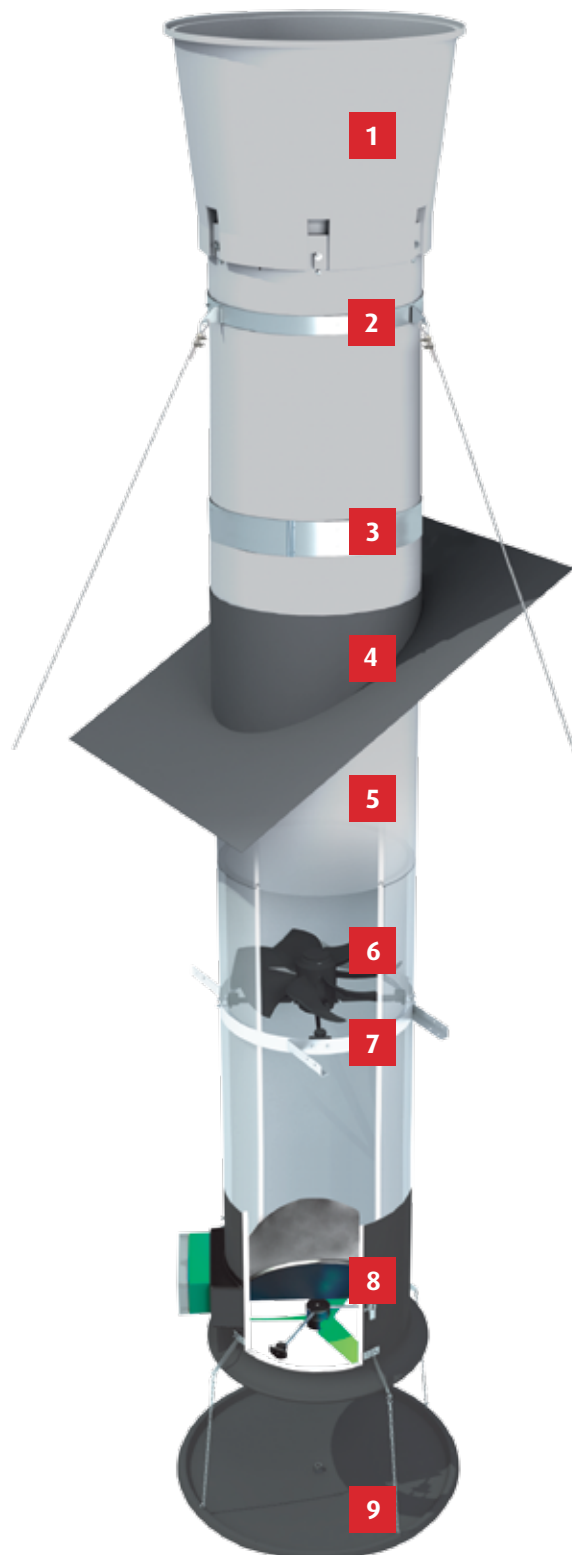


The V-belt fan (shown here with cone) belongs to the group of wall fans.



Environmental control technology

Components of a vent pipe. The following graphic shows the structure of a vent pipe.



Environmental control technology

Components of a vent pipe. The following descriptions give you a good overview of the structure of a vent pipe.



Features

1 Diffusor

- Increases air output by 15%
- Reduces rain falling into the vent pipe

2 Storm braces for stabilization

3 Pipe clamps for stabilization

4 GRP roof covering

5 Ventilation pipe

- Fully insulated
- Resistant internal and external coating (GRP)
- Special design „Vario-clip“:
Half-shells are “clipped” with the aid of a PVC profile without additional tensioning straps or pipe clamps. Space saving of up to 50% during transport, as they can be stacked inside each other.

6 Chimney fan

7 Anchor ring

8 AQC unit

- Can be used as a measuring and control unit in central exhaust air systems or under ventilation shafts
- Energy-optimized ventilation
- Consisting of measuring fan, exhaust air flap and servomotor

9 Water collecting pan



Heating

Optimal temperature in the pig house. An optimal temperature in the pig house is essential for successful production. Our products ensure temperatures at which your animals feel comfortable.



1 Ribbed pipe



2 All gas blower



Twin Pipe

Features

Warm water heating

- Available as ribbed, Delta or Twin pipe
- Made of aluminum
- Saving of energy costs
- Maximum heat yield
- Waste heat generated by a block heat and power plant can be used
- Large surface area of the pipes allows high heat emission
- No production of CO₂
- No additional humidity in the pig house
- Better control of the indoor climate
- Delta Pipe: mounted beneath the supply air duct, it heats incoming fresh air
- Twin Pipe (photo): installed in the lying area of the animals

All gas blower

- Combustion of natural or liquid gas generates heat
- Installation directly in the compartment

High pressure cooling system

Cooling and soaking at the highest level. Cooling, regulation of air humidity, as well as odor reduction and soaking of the pig house floor are all among the important tasks of our high-pressure cooling system.



Control via KL64 series possible



1 Pump

2 Nozzle

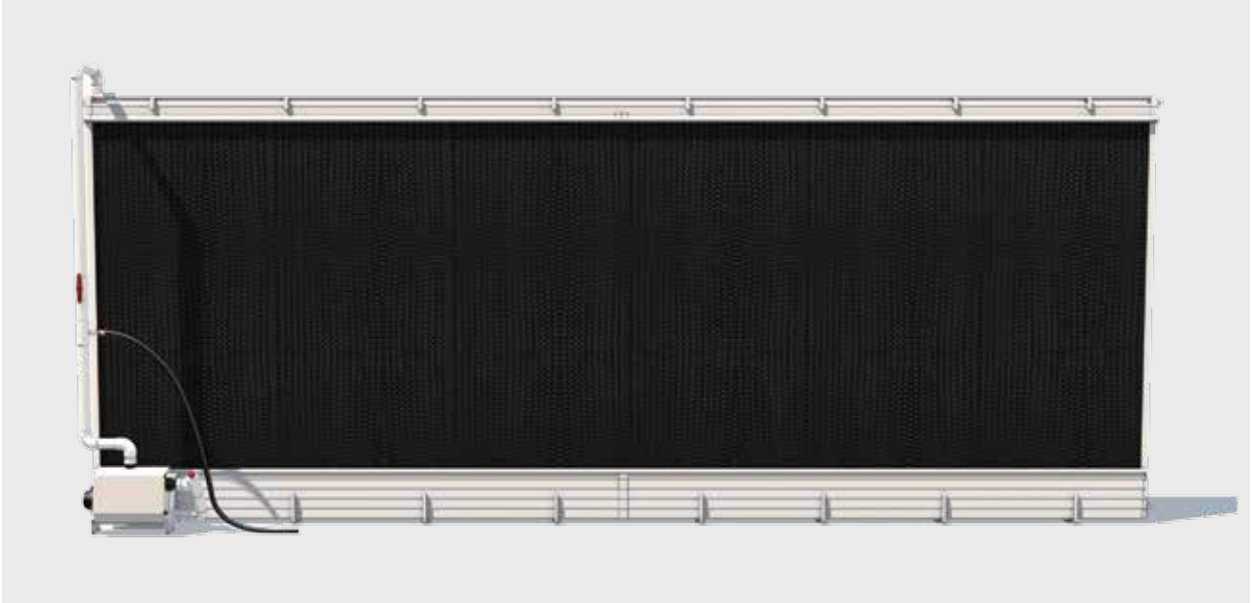
Features

- High cooling capacity
- Regulation via computer
- Long life span, since parts in the pig house are made of stainless steel or plastic
- Little maintenance
- No structural changes to the building necessary
- Can be retrofitted
- Easy assembly
- Disinfection of pig house, soaking and misting of essential oils



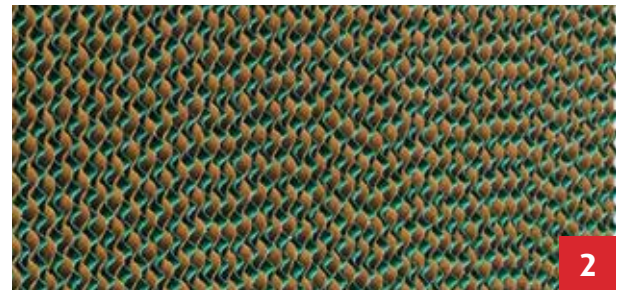
Pad climate system for evaporative cooling

Efficient cooling. For evaporative cooling, pad climate systems are used in combination with pads made of cellulose or plastic. The pads are clicked into a rail system and watered by means of a pump.



Features

- Self-contained system
- No additional external energy supply required for evaporation
- Special deflector with integrated water tank in the water channel ensures optimal water distribution on the pads
- High stability
- Easy mounting of the pads thanks to clip profiles
- Adaptable in 3m steps
- No external water tank required
- No corrosion, as all parts are made of PVC or stainless steel
- Water connection on the side or in the middle possible



- 1 Plastic pad
- 2 Cellulose pad (on customer request)



Liquid manure
treatment



Liquid manure treatment..... 124-126

Liquid manure pipe systems..... 126
Stainless steel liquid manure tank systems..... 126

Liquid feeding

Dry feeding

Electronic sow
feeding

House equipment

Environmental
control technology

Liquid manure
treatment



Liquid manure pipe systems

Modern systems with high-quality technology. The intelligent liquid manure pipe systems from WEDA offer enormous advantages for pig house climate, as well as pig house hygiene and thus make a decisive contribution to the improvement of animal health.



Features

- Simple and fast installation
- Maintenance-free
- High impact resistance and stability due to "Thermo Molding"
- Promotion of hygiene through constant drainage of liquid manure
- Suitable for new farms and conversions to the same extent

Stainless steel liquid manure tank systems

Liquid manure storage at the highest level. The stainless steel container systems are manufactured with the most modern technology out of elaborately processed stainless steel, with custom fit and individual manufacturing. Due to the special frame construction, our systems are particularly stable.



Features

- Cost-effective, light and at the same time very stable
- Long service life, easy cleaning
- Due to the extremely thin, chemically resistant passive layer, highly resistant to corrosion and friction stress
- Segmented structure enables problem-free heightening, expansion, disassembly and transfer
- Problem-free installation of ventilation, stirring and mixing equipment
- Covers made of foil or GRP

WEDA**Dammann & Westerkamp GmbH**

Am Bahnhof 10 · 49424 Lutten · Germany

Phone: +49 4441.8705.0 · Fax: +49 4441.5500

Email: info@weda.de · Internet: www.weda.de

Directors:

Klemens Westerkamp | Franz-Josef Sextro

Trade register registration:

Register Court: District Court Oldenburg

Company Registration No.: HRB 110301

Supervisory Board: Anna Westerkamp

VAT Identification No. according to §27a Value Added Tax Law: DE 811377890

Responsible for the content:

Jan Bernd Diekhaus-Röttger

Editorial and graphical implementation:

Angelika Engl

Disclaimer:

The information contained in the product portfolio at hand has been carefully checked and is updated regularly. However, we cannot assume any guarantees that the presentation of all information is - at any time - complete, correct and of latest topicality. Please always check with your local veterinary authorities and comply with the statutory provisions of your country.

All rights reserved. Any duplication or distribution in any medium, in whole or in part, shall require the written approval of WEDA Dammann & Westerkamp GmbH.

© 2018 WEDA Dammann & Westerkamp GmbH

11_18.EN

All specifications with reservation.
Alterations are possible at any time.



We care about pigs

www.weda.de



WEDA
Dammann & Westerkamp GmbH
Am Bahnhof 10 · 49424 Lutten
Germany

Phone: +49 4441.8705.0
Fax: +49 4441.5500
Email: info@weda.de
Internet: www.weda.de